

For Research Use Only

# AFP Polyclonal antibody

Catalog Number: 14550-1-AP

Featured Product

121 Publications



## Basic Information

### Catalog Number:

14550-1-AP

### Concentration:

650 ug/ml

### Source:

Rabbit

### Isotype:

IgG

### Immunogen Catalog Number:

AG6089

### GenBank Accession Number:

BC027881

### GeneID (NCBI):

174

### UNIPROT ID:

P02771

### Full Name:

alpha-fetoprotein

### Calculated MW:

69 kDa

### Observed MW:

68-72 kDa

### Purification Method:

Antigen affinity purification

### Recommended Dilutions:

WB 1:2000-1:10000

IP 0.5-4.0 ug for 1.0-3.0 mg of total protein lysate

IHC 1:250-1:1000

## Applications

### Tested Applications:

WB, IHC, IP, ELISA

### Cited Applications:

WB, IHC, IF, CoIP

### Species Specificity:

human

### Cited Species:

human, mouse, rat, goat

**Note-IHC: suggested antigen retrieval with TE buffer pH 9.0; (\*) Alternatively, antigen retrieval may be performed with citrate buffer pH 6.0**

### Positive Controls:

**WB:** BxPC-3 cells, HepG2 cells, HuH-7 cells, L02 cells, HepG2 cells, human placenta tissue

**IP:** HepG2 cells,

**IHC:** human ovary cancer tissue, human liver cancer tissue, human ovary tumor tissue

## Background Information

AFP (Alpha-fetoprotein) is a major plasma protein in the fetus and its concentration is very low in the adult (PMID:24120489). AFP can be detected at abnormally high concentrations in hepatocellular carcinomas as well as in the plasma and ascitic fluid of adults with hepatoma, indicating that AFP can serve as a tumor marker (PMID: 18669658). AFP is also a glycosylated protein and based on its binding capability to lectin Lens Culinaris Agglutinin (LCA), and total AFP can be separated into three different glycoforms, AFP-L1, AFP-L2, and AFP-L3. Core-fucosylated form of AFP (AFP-L3) is a more specific indicator than total AFP for HCC (PMID: 33128033, 35458505)

## Notable Publications

Author	Pubmed ID	Journal	Application
Jian Sun	27714143	Nanoscale	
Shaling Li	36169092	Cancer Sci	IF
Masahiro Yamamoto	28964793	Am J Pathol	IHC

## Storage

### Storage:

Store at -20°C. Stable for one year after shipment.

### Storage Buffer:

PBS with 0.02% sodium azide and 50% glycerol, pH7.3

Aliquoting is unnecessary for -20°C storage

For technical support and original validation data for this product please contact:

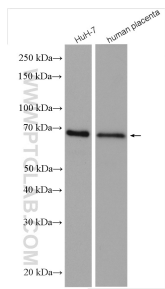
T: 4006900926

E: [Proteintech-CN@ptglab.com](mailto:Proteintech-CN@ptglab.com)

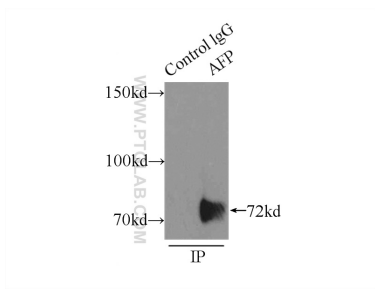
W: [ptgcn.com](http://ptgcn.com)

**This product is exclusively available under Proteintech Group brand and is not available to purchase from any other manufacturer.**

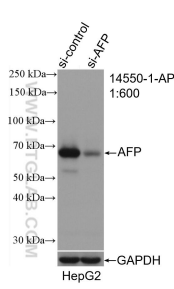
Selected Validation Data



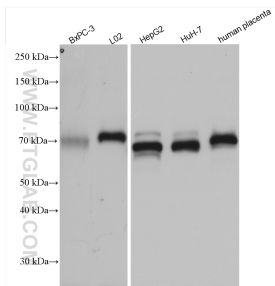
Various lysates were subjected to SDS PAGE followed by western blot with 14550-1-AP (AFP antibody) at dilution of 1:1500 incubated at room temperature for 1.5 hours.



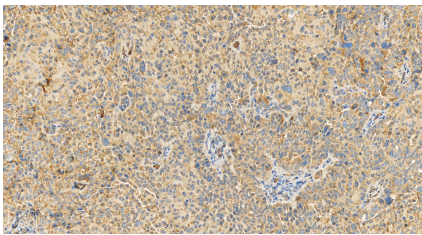
IP result of anti-AFP (IP:14550-1-AP, 5ug; Detection:14550-1-AP 1:1000) with HepG2 cells lysate 6000ug.



WB result of AFP antibody (14550-1-AP; 1:600; incubated at room temperature for 1.5 hours) with sh-Control and sh-AFP transfected HepG2 cells.



BxPC-3 cells were subjected to SDS PAGE followed by western blot with 14550-1-AP (AFP antibody) at dilution of 1:5000 incubated at room temperature for 1.5 hours.



Immunohistochemical analysis of paraffin-embedded human ovary cancer tissue slide using 14550-1-AP (AFP antibody) at dilution of 1:500 (under 20x lens). Heat mediated antigen retrieval with Tris-EDTA buffer (pH 9.0).