

For Research Use Only

LDHC Polyclonal antibody

Catalog Number: 14546-1-AP

Featured Product



Basic Information

Catalog Number:

14546-1-AP

Size:

140 ug/ml

Source:

Rabbit

Isotype:

IgG

Immunogen Catalog Number:

AG6050

GenBank Accession Number:

BC064388

GeneID (NCBI):

3948

UNIPROT ID:

P07864

Full Name:

lactate dehydrogenase C

Calculated MW:

36 kDa

Observed MW:

31-35 kDa

Purification Method:

Antigen affinity purification

Recommended Dilutions:

WB 1:500-1:2000

IHC 1:50-1:500

IF/ICC 1:50-1:500

Applications

Tested Applications:

WB, IHC, IF/ICC, ELISA

Species Specificity:

human, mouse, rat

Note-IHC: suggested antigen retrieval with TE buffer pH 9.0; (*) Alternatively, antigen retrieval may be performed with citrate buffer pH 6.0

Positive Controls:

WB : HeLa cells, MDA-MB-231 cells, PC-3 cells, mouse testis tissue, rat testis tissue

IHC : mouse testis tissue,

IF/ICC : HeLa cells,

Background Information

LDHC, also named as CT32 and LDH-X, belongs to the LDH/MDH superfamily and LDH family. LDHC is a possible role in sperm motility. LDHC catalyzes the reaction: (S)-lactate + NAD⁺ = pyruvate + NADH. LDHC is a testis-specific isoform. Abnormal LDHC expression is associated with several forms of cancer. The antibody has no cross reaction with LDHA and LDHB.

Storage

Storage:

Store at -20°C. Stable for one year after shipment.

Storage Buffer:

PBS with 0.02% sodium azide and 50% glycerol pH 7.3.

Aliquoting is unnecessary for -20°C storage

For technical support and original validation data for this product please contact:

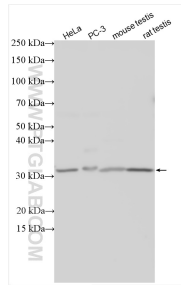
T: 4006900926

E: Proteintech-CN@ptglab.com

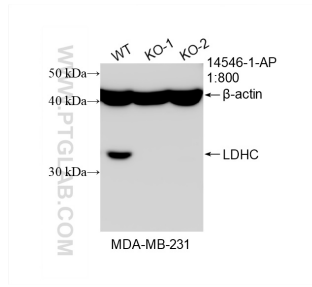
W: ptgcn.com

This product is exclusively available under Proteintech Group brand and is not available to purchase from any other manufacturer.

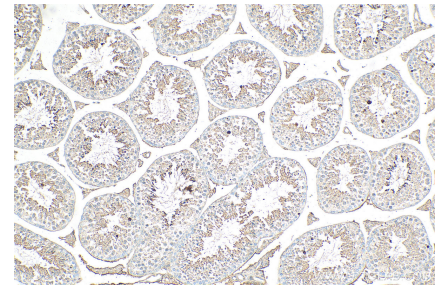
Selected Validation Data



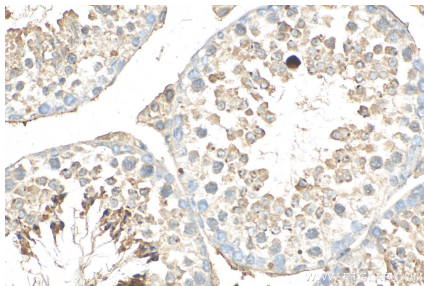
Various lysates were subjected to SDS PAGE followed by western blot with 14546-1-AP (LDHC antibody) at dilution of 1:1000 incubated at room temperature for 1.5 hours.



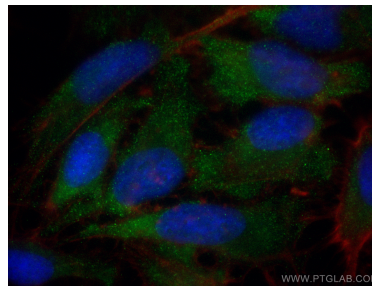
WB result of LDHC antibody (14546-1-AP; 1:800; room temperature for 1.5 hours) with wild-type and LDHC knockout MDA-MB-231 cells.



Immunohistochemical analysis of paraffin-embedded mouse testis tissue slide using 14546-1-AP (LDHC antibody) at dilution of 1:200 (under 10x lens). Heat mediated antigen retrieval with Tris-EDTA buffer (pH 9.0).



Immunohistochemical analysis of paraffin-embedded mouse testis tissue slide using 14546-1-AP (LDHC antibody) at dilution of 1:200 (under 40x lens). Heat mediated antigen retrieval with Tris-EDTA buffer (pH 9.0).



Immunofluorescent analysis of (-20°C Ethanol) fixed HeLa cells using LDHC antibody (14546-1-AP) at dilution of 1:200 and Multi-rAb CoraLite® Plus 488-Goat Anti-Rabbit Recombinant Secondary Antibody (H+L) (RGAR002), CL594-Phalloidin (red).