

For Research Use Only

# CLIC1 Polyclonal antibody

Catalog Number: 14545-1-AP

Featured Product

11 Publications



## Basic Information

### Catalog Number:

14545-1-AP

### Concentration:

550 ug/ml

### Source:

Rabbit

### Isotype:

IgG

### Immunogen Catalog Number:

AG6049

### GenBank Accession Number:

BC064527

### GeneID (NCBI):

1192

### UNIPROT ID:

O00299

### Full Name:

chloride intracellular channel 1

### Calculated MW:

27 kDa

### Observed MW:

27-32 kDa

### Purification Method:

Antigen affinity purification

### Recommended Dilutions:

WB: 1:500-1:1000

IP: 0.5-4.0 ug for 1.0-3.0 mg of total protein lysate

IHC: 1:200-1:800

IF/ICC: 1:50-1:500

## Applications

### Tested Applications:

WB, IHC, IF/ICC, IP, ELISA

### Cited Applications:

WB, IHC, IF

### Species Specificity:

human, mouse, rat

### Cited Species:

human, mouse, rat

**Note-IHC: suggested antigen retrieval with TE buffer pH 9.0; (\*) Alternatively, antigen retrieval may be performed with citrate buffer pH 6.0**

### Positive Controls:

WB: HL-60 cells, HeLa cells

IP: HeLa cells,

IHC: mouse colon tissue, human colon tissue, human pancreas tissue, mouse kidney tissue

IF/ICC: HepG2 cells, HeLa cells

## Background Information

Chloride intracellular channel protein 1 (CLIC1) is a member of the chloride intracellular channel protein family. It plays a crucial role in various cellular processes, including the regulation of chloride ion transport, cell viability, and mitochondrial function. CLIC1 is involved in the formation of membrane-inserted channels that facilitate chloride ion movement, which is essential for maintaining cellular homeostasis and function (PMID: 32116799). Additionally, CLIC1 has been implicated in cancer progression, where it influences cell proliferation, migration, and invasion (PMID: 38027011).

## Notable Publications

Author	Pubmed ID	Journal	Application
Jinwen Xia	36081926	Breast Cancer (Dove Med Press)	WB, IHC
Huiwu Geng	36252281	Transl Oncol	WB
Xuyong Wei	35722791	Technol Cancer Res Treat	WB, IHC

## Storage

### Storage:

Store at -20°C. Stable for one year after shipment.

### Storage Buffer:

PBS with 0.02% sodium azide and 50% glycerol, pH7.3

Aliquoting is unnecessary for -20°C storage

For technical support and original validation data for this product please contact:

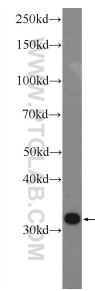
T: 4006900926

E: [Proteintech-CN@ptglab.com](mailto:Proteintech-CN@ptglab.com)

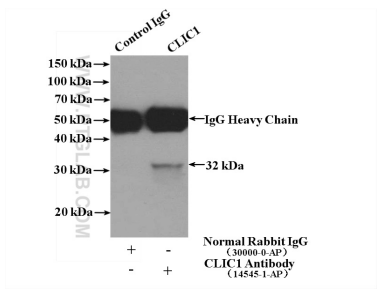
W: [ptgcn.com](http://ptgcn.com)

**This product is exclusively available under Proteintech Group brand and is not available to purchase from any other manufacturer.**

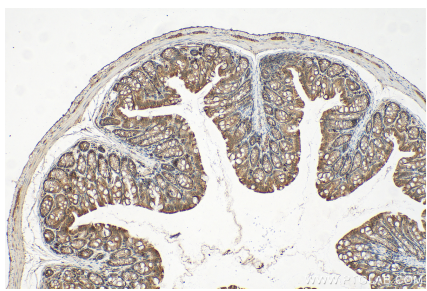
Selected Validation Data



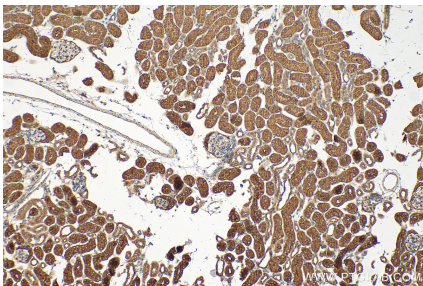
HL-60 cells were subjected to SDS PAGE followed by western blot with 14545-1-AP (CLIC1 Antibody) at dilution of 1:600 incubated at room temperature for 1.5 hours.



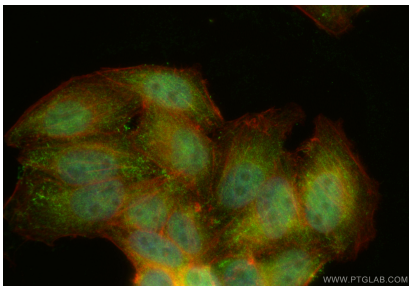
IP result of anti-CLIC1 (IP:14545-1-AP, 4ug; Detection:14545-1-AP 1:300) with HeLa cells lysate 1200ug.



Immunohistochemical analysis of paraffin-embedded mouse colon tissue slide using 14545-1-AP (CLIC1 antibody) at dilution of 1:400 (under 10x lens). Heat mediated antigen retrieval with Tris-EDTA buffer (pH 9.0).



Immunohistochemical analysis of paraffin-embedded mouse kidney tissue slide using 14545-1-AP (CLIC1 antibody) at dilution of 1:400 (under 10x lens). Heat mediated antigen retrieval with Tris-EDTA buffer (pH 9.0).



Immunofluorescent analysis of (4% PFA) fixed HepG2 cells using CLIC1 antibody (14545-1-AP) at dilution of 1:200 and CoraLite®488-Conjugated Goat Anti-Rabbit IgG(H+L) (SA00013-2), CL594-phalloidin (red).