

For Research Use Only

# PSMB9 Polyclonal antibody

Catalog Number: 14544-1-AP

Featured Product

20 Publications



## Basic Information

### Catalog Number:

14544-1-AP

### Concentration:

400 µg/ml

### Source:

Rabbit

### Isotype:

IgG

### Immunogen Catalog Number:

AG6048

### GenBank Accession Number:

BC065513

### GeneID (NCBI):

5698

### UNIPROT ID:

P28065

### Full Name:

proteasome (prosome, macropain)  
subunit, beta type, 9 (large  
multifunctional peptidase 2)

### Calculated MW:

23 kDa

### Observed MW:

20-23 kDa

### Purification Method:

Antigen affinity purification

### Recommended Dilutions:

WB 1:1000-1:6000

IP 0.5-4.0 µg for 1.0-3.0 mg of total  
protein lysate

IHC 1:50-1:500

IF/ICC 1:50-1:500

## Applications

### Tested Applications:

WB, IHC, IF/ICC, IP, ELISA

### Cited Applications:

WB, IHC, IF

### Species Specificity:

human, mouse, rat

### Cited Species:

human, mouse, rat

**Note-IHC: suggested antigen retrieval with  
TE buffer pH 9.0; (\*) Alternatively, antigen  
retrieval may be performed with citrate  
buffer pH 6.0**

### Positive Controls:

**WB**: HL-60 cells, rat spleen tissue, mouse kidney  
tissue, mouse liver tissue, mouse lung tissue, mouse  
spleen tissue, rat liver tissue, Raji cells

**IP**: Raji cells,

**IHC**: human spleen tissue, human tonsillitis tissue,  
human renal cell carcinoma tissue, mouse bladder  
tissue, mouse stomach tissue, rat stomach tissue

**IF/ICC**: HepG2 cells,

## Background Information

PSMB9, also named as LMP2, PSMB6i and RING12, belongs to the peptidase T1B family. The proteasome is a multicatalytic proteinase complex which is characterized by its ability to cleave peptides with Arg, Phe, Tyr, Leu, and Glu adjacent to the leaving group at neutral or slightly basic pH. Replacement of PSMB6 by PSMB9 increases the capacity of the immunoproteasome to cleave model peptides after hydrophobic and basic residues. High expression of PSMB9 associated with the poor prognosis of patients with NPC.

## Notable Publications

Author	Pubmed ID	Journal	Application
Yuki Uchiyama	35594857	Mol Cell	WB
Xin Xie	35710020	Biochem Pharmacol	WB
Xin Xie	32595507	Front Pharmacol	WB

## Storage

### Storage:

Store at -20°C. Stable for one year after shipment.

### Storage Buffer:

PBS with 0.02% sodium azide and 50% glycerol pH 7.3.

Aliquoting is unnecessary for -20°C storage

For technical support and original validation data for this product please contact:

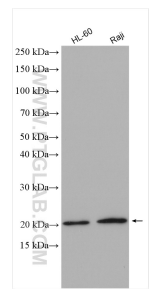
T: 4006900926

E: [Proteintech-CN@ptglab.com](mailto:Proteintech-CN@ptglab.com)

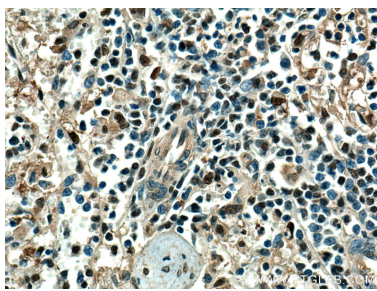
W: [ptgcn.com](http://ptgcn.com)

**This product is exclusively available under Proteintech Group brand and is not available to purchase from any other manufacturer.**

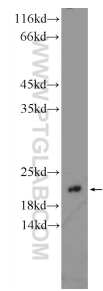
Selected Validation Data



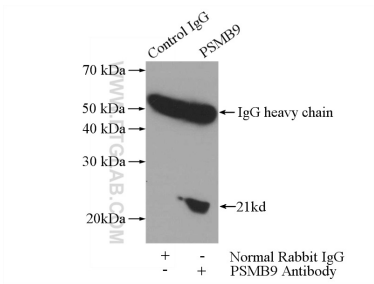
Various lysates were subjected to SDS PAGE followed by western blot with 14544-1-AP (PSMB9 antibody) at dilution of 1:3000 incubated at room temperature for 1.5 hours.



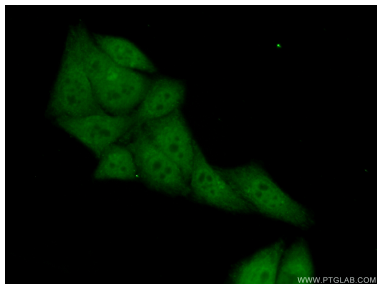
Immunohistochemical analysis of paraffin-embedded human spleen tissue slide using 14544-1-AP (PSMB9 antibody) at dilution of 1:200 (under 40x lens). Heat mediated antigen retrieval with Tris-EDTA buffer (pH 9.0).



mouse kidney tissue were subjected to SDS PAGE followed by western blot with 14544-1-AP (LMP2 antibody) at dilution of 1:300 incubated at room temperature for 1.5 hours.



IP result of anti-PSMB9 (IP:14544-1-AP, 4ug; Detection:14544-1-AP 1:300) with Raji cells lysate 2800ug.



Immunofluorescent analysis of (10% Formaldehyde) fixed HepG2 cells using 14544-1-AP (LMP2 antibody) at dilution of 1:50 and Alexa Fluor 488-conjugated Goat Anti-Rabbit IgG(H+L).