

For Research Use Only

TCF7L1 Polyclonal antibody

Catalog Number: 14519-1-AP **9 Publications**



Basic Information

Catalog Number: 14519-1-AP	GenBank Accession Number: BC058894	Purification Method: Antigen affinity purification
Size: 450 µg/ml	GeneID (NCBI): 83439	Recommended Dilutions: WB 1:500-1:1000 IHC 1:20-1:200
Source: Rabbit	UNIPROT ID: Q9HCS4	
Isotype: IgG	Full Name: transcription factor 7-like 1 (T-cell specific, HMG-box)	
Immunogen Catalog Number: AG5983	Calculated MW: 63 kDa	
	Observed MW: 63-70 kDa	

Applications

Tested Applications: IHC, WB, ELISA	Positive Controls: WB : A431 cells, mouse brain tissue, JAR cells, mouse liver tissue, rat liver tissue IHC : human breast cancer tissue,
Cited Applications: WB, IF, IHC	
Species Specificity: human, mouse, rat	
Cited Species: human, rat, mouse, zebrafish	

Note-IHC: suggested antigen retrieval with TE buffer pH 9.0; (*) Alternatively, antigen retrieval may be performed with citrate buffer pH 6.0

Background Information

TCF7L1 is one of TCF/LEF transcription factors that are mediators of the Wnt signaling pathway and are antagonized by the TGF-beta signaling pathway. It binds to DNA and acts as a repressor in the absence of CTNNB1, and as an activator in its presence. It's necessary for the terminal differentiation of epidermal cells, the formation of keratohyalin granules and the development of the barrier function of the epidermis

Notable Publications

Author	Pubmed ID	Journal	Application
Yu-Ching Wen	34799554	Oncogenesis	IHC
Kathleen Hübner	30451830	Nat Commun	IF
Zhi-yu Li	36302622	Korean J Physiol Pharmacol	WB

Storage

Storage:
Store at -20°C. Stable for one year after shipment.
Storage Buffer:
PBS with 0.02% sodium azide and 50% glycerol pH 7.3.
Aliquoting is unnecessary for -20°C storage

For technical support and original validation data for this product please contact:

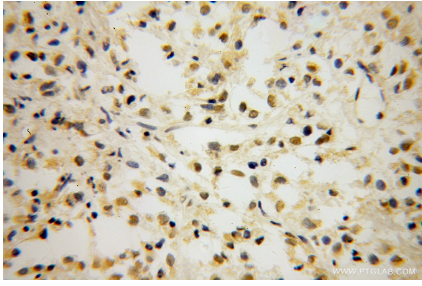
T: 4006900926

E: Proteintech-CN@ptglab.com

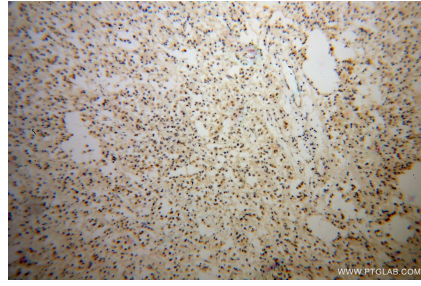
W: ptgcn.com

This product is exclusively available under Proteintech Group brand and is not available to purchase from any other manufacturer.

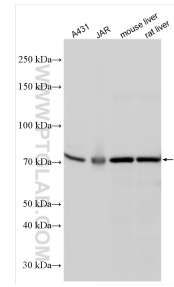
Selected Validation Data



Immunohistochemical analysis of paraffin-embedded human breast cancer using 14519-1-AP (TCF7L1 antibody) at dilution of 1:100 (under 40x lens).



Immunohistochemical analysis of paraffin-embedded human breast cancer using 14519-1-AP (TCF7L1 antibody) at dilution of 1:100 (under 10x lens).



Various lysates were subjected to SDS PAGE followed by western blot with 14519-1-AP (TCF7L1 antibody) at dilution of 1:800 incubated at room temperature for 1.5 hours.