

For Research Use Only

CREB3L2 Polyclonal antibody

Catalog Number: 14514-1-AP

6 Publications



Basic Information

Catalog Number:

14514-1-AP

Size:

600 ug/ml

Source:

Rabbit

Isotype:

IgG

Immunogen Catalog Number:

AG5973

GenBank Accession Number:

BC063666

GeneID (NCBI):

64764

UNIPROT ID:

Q70SY1

Full Name:

cAMP responsive element binding protein 3-like 2

Calculated MW:

57 kDa

Observed MW:

60-70 kDa

Purification Method:

Antigen affinity purification

Recommended Dilutions:

WB 1:500-1:2000

IF/ICC 1:50-1:500

Applications

Tested Applications:

WB, IF/ICC, ELISA

Cited Applications:

WB, IF

Species Specificity:

human, mouse, rat

Cited Species:

human

Positive Controls:

WB : Jurkat cells, mouse liver tissue, K-562 cells, SH-SY5Y cells, Neuro-2a cells

IF/ICC : HepG2 cells,

Background Information

Cyclic AMP-responsive element-binding protein 3-like protein 2 (CREB3L2), also named BBF2H7, is a transcriptional activator which is activated during endoplasmic reticulum (ER) stress late phase. It has 3 isoforms produced by alternative splicing. CREB3L2 exerts protective effect in neurons by regulation of unfolded protein response (UPR)-dependent gene transcriptions. N-terminal cytoplasmic domain of CREB3L2 is cleaved under ER stress and then translocates to the nucleus. Catalog# 14514-1-AP is a rabbit polyclonal antibody raised against N-terminal (1-247aa) of human CREB3L2.

Notable Publications

Author	Pubmed ID	Journal	Application
Ryoichi Murase	36152228	Mol Biol Rep	WB
Yongli Zhang	34664264	Br J Pharmacol	WB
Kentaro Oh-Hashi	33803345	Int J Mol Sci	WB

Storage

Storage:

Store at -20°C. Stable for one year after shipment.

Storage Buffer:

PBS with 0.02% sodium azide and 50% glycerol pH 7.3.

Aliquoting is unnecessary for -20°C storage

For technical support and original validation data for this product please contact:

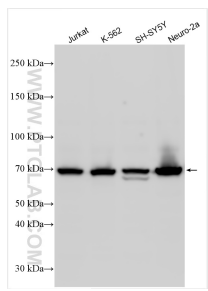
T: 4006900926

E: Proteintech-CN@ptglab.com

W: ptgcn.com

This product is exclusively available under Proteintech Group brand and is not available to purchase from any other manufacturer.

Selected Validation Data



Immunofluorescent analysis of (-20°C Ethanol) fixed HepG2 cells using CREB3L2 antibody (14514-1-AP) at dilution of 1:200 and CoraLite® 594-Conjugated Goat Anti-Rabbit IgG(H+L) (SA00013-4).

Various lysates were subjected to SDS PAGE followed by western blot with 14514-1-AP (CREB3L2 antibody) at dilution of 1:1000 incubated at room temperature for 1.5 hours.