

For Research Use Only

# SREBF2 Polyclonal antibody

Catalog Number: 14508-1-AP **34 Publications**



## Basic Information

**Catalog Number:**

14508-1-AP

**Size:**

253 µg/ml

**Source:**

Rabbit

**Isotype:**

IgG

**Immunogen Catalog Number:**

AG5967

**GenBank Accession Number:**

BC056158

**GeneID (NCBI):**

6721

**UNIPROT ID:**

Q12772

**Full Name:**

sterol regulatory element binding transcription factor 2

**Calculated MW:**

124 kDa

**Observed MW:**

68 kDa

**Purification Method:**

Antigen affinity purification

**Recommended Dilutions:**

WB 1:500-1:2000

IP 0.5-4.0 µg for 1.0-3.0 mg of total protein lysate

IHC 1:50-1:500

## Applications

**Tested Applications:**

IHC, IP, WB, ELISA

**Cited Applications:**

WB, IHC, ChIP

**Species Specificity:**

human, mouse, rat

**Cited Species:**

human, chicken, rat, mouse, Hamster

**Note-IHC: suggested antigen retrieval with TE buffer pH 9.0; (\*) Alternatively, antigen retrieval may be performed with citrate buffer pH 6.0**

**Positive Controls:**

**WB:** Jurkat cells, mouse kidney tissue, HepG2 cells, human kidney tissue, HEK-293 cells, rat kidney tissue, HeLa cells, rat liver tissue

**IP:** HeLa cells,

**IHC:** mouse brain tissue, human kidney tissue, human liver cancer tissue

## Background Information

SREBF2, also named as BHLHD2, is a 1141 amino acid protein, which contains 1 bHLH domain and belongs to the SREBP family. SREBF2 localizes in the endoplasmic reticulum membrane and is ubiquitously expressed in adult and fetal tissues. SREBF2 as a transcriptional activator is required for lipid homeostasis. SREBF2 expression is dynamically regulated in response to nutritional and hormonal cues.

## Notable Publications

Author	Pubmed ID	Journal	Application
Dandan Wang	32913121	J Biol Chem	WB
Deshi Dong	25310017	Food Funct	WB
Xiaoke Wang	31668954	Environ Pollut	WB

## Storage

**Storage:**

Store at -20°C. Stable for one year after shipment.

**Storage Buffer:**

PBS with 0.02% sodium azide and 50% glycerol pH 7.3.

Aliquoting is unnecessary for -20°C storage

For technical support and original validation data for this product please contact:

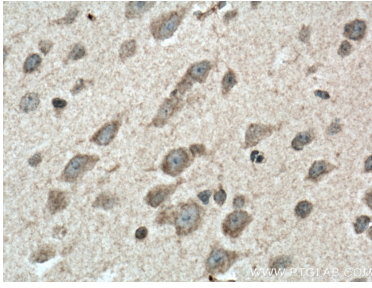
T: 4006900926

E: Proteintech-CN@ptglab.com

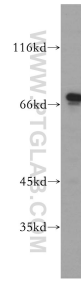
W: ptgcn.com

**This product is exclusively available under Proteintech Group brand and is not available to purchase from any other manufacturer.**

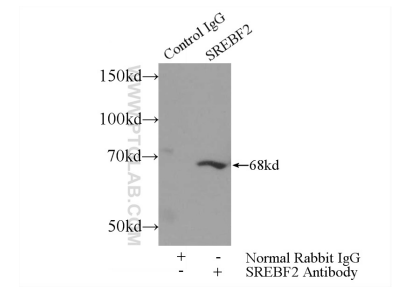
## Selected Validation Data



Immunohistochemical analysis of paraffin-embedded mouse brain tissue slide using 14508-1-AP (SREBF2 antibody) at dilution of 1:200 (under 40x lens). Heat mediated antigen retrieval with Tris-EDTA buffer (pH 9.0).



Jurkat cells were subjected to SDS PAGE followed by western blot with 14508-1-AP (SREBF2 antibody) at dilution of 1:1000 incubated at room temperature for 1.5 hours.



IP result of anti-SREBF2 (IP:14508-1-AP, 3ug; Detection:14508-1-AP 1:500) with HeLa cells lysate 3000ug.