

For Research Use Only

# GRAP Polyclonal antibody

Catalog Number: 14505-1-AP **2 Publications**



## Basic Information

Catalog Number: 14505-1-AP	GenBank Accession Number: BC063035	Purification Method: Antigen affinity purification
Size: 500 µg/ml	GeneID (NCBI): 10750	Recommended Dilutions: IHC 1:20-1:200
Source: Rabbit	UNIPROT ID: Q13588	
Isotype: IgG	Full Name: GRB2-related adaptor protein	
Immunogen Catalog Number: AG5962	Calculated MW: 25 kDa	

## Applications

Tested Applications: IHC, ELISA	Positive Controls: IHC : human lymphoma tissue,
Cited Applications: WB	
Species Specificity: human, mouse, rat	
Cited Species: human, mouse	
<b>Note-IHC: suggested antigen retrieval with TE buffer pH 9.0; (*) Alternatively, antigen retrieval may be performed with citrate buffer pH 6.0</b>	

## Background Information

### Notable Publications

Author	Pubmed ID	Journal	Application
Xiaoyan Wu	38537899	Life Sci	WB
Xiaoyan Wu	37343720	Life Sci	WB

## Storage

**Storage:**  
Store at -20°C. Stable for one year after shipment.  
**Storage Buffer:**  
PBS with 0.02% sodium azide and 50% glycerol pH 7.3.  
Aliquoting is unnecessary for -20°C storage

For technical support and original validation data for this product please contact:

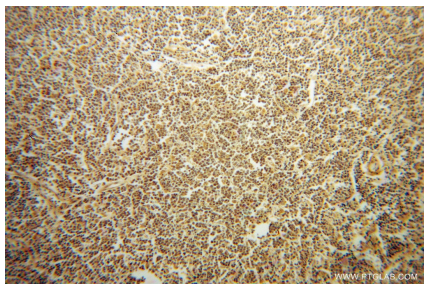
T: 4006900926

E: [Proteintech-CN@ptglab.com](mailto:Proteintech-CN@ptglab.com)

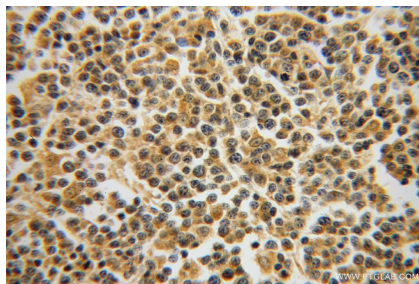
W: [ptgcn.com](http://ptgcn.com)

This product is exclusively available under Proteintech Group brand and is not available to purchase from any other manufacturer.

## Selected Validation Data



Immunohistochemical analysis of paraffin-embedded human lymphoma using 14505-1-AP (GRAP antibody) at dilution of 1:50 (under 10x lens).



Immunohistochemical analysis of paraffin-embedded human lymphoma using 14505-1-AP (GRAP antibody) at dilution of 1:50 (under 40x lens).