

## PRM2 Polyclonal antibody

Catalog Number: 14500-1-AP

10 Publications

## Basic Information

## Catalog Number:

14500-1-AP

## Size:

550 µg/ml

## Source:

Rabbit

## Isotype:

IgG

## Immunogen Catalog Number:

AG5952

## GenBank Accession Number:

BC066338

## GeneID (NCBI):

5620

## UNIPROT ID:

P04554

## Full Name:

protamine 2

## Calculated MW:

13 kDa

## Observed MW:

10-25 kDa

## Purification Method:

Antigen affinity purification

## Recommended Dilutions:

WB 1:200-1:1000

IHC 1:250-1:1000

## Applications

## Tested Applications:

WB, IHC, ELISA

## Cited Applications:

WB, IF, IHC

## Species Specificity:

human

## Cited Species:

human, mouse

**Note-IHC: suggested antigen retrieval with TE buffer pH 9.0; (\*) Alternatively, antigen retrieval may be performed with citrate buffer pH 6.0**

## Positive Controls:

WB : human testis tissue,

IHC : human testis tissue,

## Background Information

PRM2 (Protamine-2) is the main DNA-binding protein in the sperm nucleus, consisting of a C-terminal mature PRM2 (mPRM2) domain and an N-terminal lytic PRM2 (cPRM2) domain, which is lyzed sequentially after binding to DNA. PRM2 plays an important role in spermatogenesis and development. PRM2 is specifically expressed in sperm and localized in the sperm nucleus.

## Notable Publications

Author	Pubmed ID	Journal	Application
Zijun Peng	34741939	J Hazard Mater	IF
Maoying Zhu	33194394	PeerJ	IF
Jianhui Liu	34058501	Environ Pollut	WB

## Storage

## Storage:

Store at -20°C. Stable for one year after shipment.

## Storage Buffer:

PBS with 0.02% sodium azide and 50% glycerol pH 7.3.

Aliquoting is unnecessary for -20°C storage

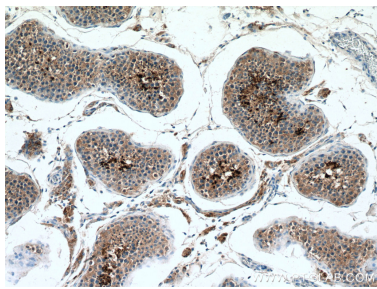
For technical support and original validation data for this product please contact:

T: 4006900926

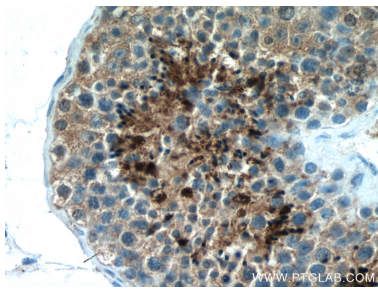
E: [Proteintech-CN@ptglab.com](mailto:Proteintech-CN@ptglab.com)W: [ptgcn.com](http://ptgcn.com)

This product is exclusively available under Proteintech Group brand and is not available to purchase from any other manufacturer.

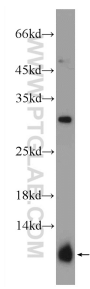
Selected Validation Data



Immunohistochemical analysis of paraffin-embedded human testis tissue slide using 14500-1-AP (PRM2 antibody) at dilution of 1:500 (under 10x lens). Heat mediated antigen retrieval with Tris-EDTA buffer (pH 9.0).



Immunohistochemical analysis of paraffin-embedded human testis tissue slide using 14500-1-AP (PRM2 antibody) at dilution of 1:500 (under 40x lens). Heat mediated antigen retrieval with Tris-EDTA buffer (pH 9.0).



human testis tissue were subjected to SDS PAGE followed by western blot with 14500-1-AP (PRM2 Antibody) at dilution of 1:300 incubated at room temperature for 1.5 hours.