

For Research Use Only

VTI1B Polyclonal antibody, PBS Only

Catalog Number: 14495-1-PBS

Featured Product



Basic Information

Catalog Number:

14495-1-PBS

Source:

Rabbit

Isotype:

IgG

Immunogen Catalog Number:

AG5906

GenBank Accession Number:

BC003142

GeneID (NCBI):

10490

UNIPROT ID:

Q9UEU0

Full Name:

vesicle transport through interaction with t-SNAREs homolog 1B (yeast)

Calculated MW:

27 kDa

Observed MW:

29 kDa

Purification Method:

Antigen affinity purification

Applications

Tested Applications:

WB, IHC, IP, Indirect ELISA

Species Specificity:

human, mouse, rat

Background Information

Fusion between membranes is mediated by specific SNARE (soluble N-ethylmaleimide-sensitive factor attachment protein receptor) complexes. Two human SNARE proteins, VTI1A and VTI1B, are homologous to the yeast Q-SNARE Vti1p, which is part of several SNARE complexes in different transport steps (PMID: 12067063). Both proteins had a distinct but overlapping localization. VTI1A is localized predominantly in the TGN, VTI1B in late endosomes (PMID: 12067063; 21262811). VTI1B forms a SNARE complex with STX7, STX8, and VAMP8, which functions in the homotypic fusion of late endosomes. It is a component of the SNARE complex composed of STX7, STX8, VAMP7, and VIT1B that is required for heterotypic fusion of late endosomes with lysosomes. It has also been reported that VIT1B interacts with EpsinR, a protein involved in exocytic trafficking (PMID: 15371541).

Storage

Storage:

Store at -80°C.

The product is shipped with ice packs. Upon receipt, store it immediately at -80°C

Storage Buffer:

PBS only, pH7.3

For technical support and original validation data for this product please contact:

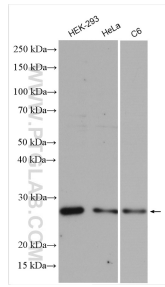
T: 4006900926

E: Proteintech-CN@ptglab.com

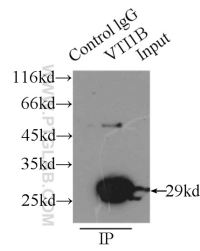
W: ptgcn.com

This product is exclusively available under Proteintech Group brand and is not available to purchase from any other manufacturer.

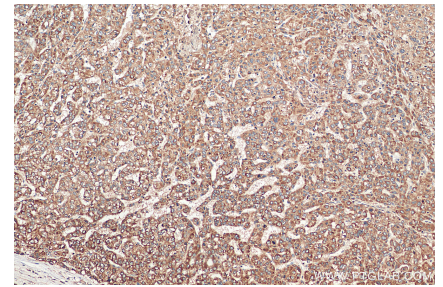
Selected Validation Data



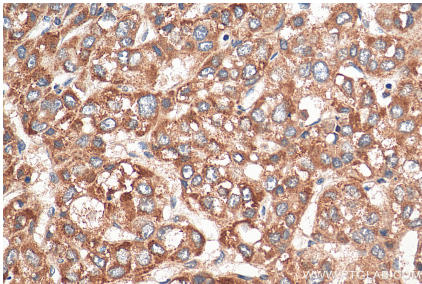
Various lysates were subjected to SDS PAGE followed by western blot with 14495-1-AP (VT1B antibody) at dilution of 1:2000 incubated at room temperature for 1.5 hours. This data was developed using the same antibody clone with 14495-1-PBS in a different storage buffer formulation.



IP result of anti-VTI1B (IP:14495-1-AP, 3ug; Detection:14495-1-AP 1:1000) with HeLa cells lysate 2500ug. This data was developed using the same antibody clone with 14495-1-PBS in a different storage buffer formulation.



Immunohistochemical analysis of paraffin-embedded human liver cancer tissue slide using 14495-1-AP (VT1B antibody) at dilution of 1:200 (under 10x lens). Heat mediated antigen retrieval with Tris-EDTA buffer (pH 9.0). This data was developed using the same antibody clone with 14495-1-PBS in a different storage buffer formulation.



Immunohistochemical analysis of paraffin-embedded human liver cancer tissue slide using 14495-1-AP (VT1B antibody) at dilution of 1:200 (under 40x lens). Heat mediated antigen retrieval with Tris-EDTA buffer (pH 9.0). This data was developed using the same antibody clone with 14495-1-PBS in a different storage buffer formulation.