

For Research Use Only

# Gastrokine 1 Polyclonal antibody

Catalog Number: 14494-1-AP



## Basic Information

<b>Catalog Number:</b> 14494-1-AP	<b>GenBank Accession Number:</b> BC059778	<b>Purification Method:</b> Antigen affinity purification
<b>Size:</b> 260 µg/ml	<b>GeneID (NCBI):</b> 56287	<b>Recommended Dilutions:</b> WB 1:1000-1:4000 IHC 1:50-1:500
<b>Source:</b> Rabbit	<b>UNIPROT ID:</b> Q9NS71	
<b>Isotype:</b> IgG	<b>Full Name:</b> gastrokine 1	
<b>Immunogen Catalog Number:</b> AG5898	<b>Calculated MW:</b> 22 kDa	
	<b>Observed MW:</b> 20-22 kDa	

## Applications

**Tested Applications:**  
IHC, WB, ELISA

**Species Specificity:**  
human, mouse, rat

**Note-IHC: suggested antigen retrieval with TE buffer pH 9.0; (\*) Alternatively, antigen retrieval may be performed with citrate buffer pH 6.0**

**Positive Controls:**

**WB:** human stomach tissue, mouse stomach tissue, rat stomach tissue

**IHC:** human stomach tissue, human stomach cancer tissue

## Background Information

Gastrokine 1 (GKN1), a stomach-specific protein also known as 18 kDa antrum mucosa protein (AMP-18) or foveolin, belongs to the gastrokine family of gastric mucus cell-secreted proteins. The human GKN1 gene has been localized in a region of chromosome 2p13 of about 6 kb and contains 6 exons. GKN1 is expressed only in normal human stomach, but is absent from gastric adenocarcinomas, gastro-esophageal adenocarcinoma cell lines, and other normal and tumor gastro-intestinal tissues. GKN1 may play an important role in normal gastric function and may be a gastric tumour suppressor.

## Storage

**Storage:**

Store at -20°C. Stable for one year after shipment.

**Storage Buffer:**

PBS with 0.02% sodium azide and 50% glycerol pH 7.3.

Aliquoting is unnecessary for -20°C storage

For technical support and original validation data for this product please contact:

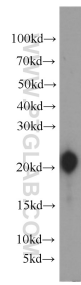
T: 4006900926

E: Proteintech-CN@ptglab.com

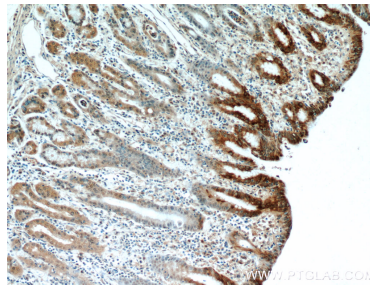
W: ptgcn.com

**This product is exclusively available under Proteintech Group brand and is not available to purchase from any other manufacturer.**

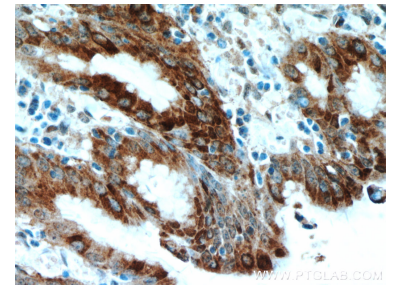
## Selected Validation Data



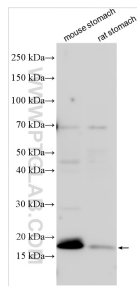
human stomach tissue were subjected to SDS PAGE followed by western blot with 14494-1-AP (Gastrokine 1 antibody) at dilution of 1:2000 incubated at room temperature for 1.5 hours.



Immunohistochemical analysis of paraffin-embedded human stomach using 14494-1-AP (Gastrokine 1 antibody) at dilution of 1:100 (under 10x lens).



Immunohistochemical analysis of paraffin-embedded human stomach using 14494-1-AP (Gastrokine 1 antibody) at dilution of 1:100 (under 40x lens).



Various lysates were subjected to SDS PAGE followed by western blot with 14494-1-AP (Gastrokine 1 antibody) at dilution of 1:500 incubated at room temperature for 1.5 hours.