

For Research Use Only

SIRP Alpha Polyclonal antibody

Catalog Number: 14482-1-AP **4 Publications**



Basic Information

Catalog Number:

14482-1-AP

Size:

550 µg/ml

Source:

Rabbit

Isotype:

IgG

Immunogen Catalog Number:

AG5865

GenBank Accession Number:

BC033092

GeneID (NCBI):

140885

UNIPROT ID:

P78324

Full Name:

signal-regulatory protein alpha

Calculated MW:

55 kDa

Observed MW:

75-85 kDa

Purification Method:

Antigen affinity purification

Recommended Dilutions:

WB 1:500-1:1000

Applications

Tested Applications:

WB, ELISA

Cited Applications:

WB

Species Specificity:

human, mouse, rat

Cited Species:

human, mouse

Positive Controls:

WB : HL-60 cells, THP-1 cells, PC-12 cells, U-937 cells, mouse cerebellum tissue

Background Information

SIRP Alpha, also known as CD172a, SHPS-1, and BIT, belongs to the SIRP family. SIRP Alpha is a transmembrane glycoprotein expressed explicitly on myeloid cells and provides a "do not eat me" signal after engaging with integrin-associated protein CD47 on tumor cells (PMID: 36419386). SIRP Alpha shows heterogeneity in molecular weight (~65-120 kDa) in various tissues due to differential glycosylation (PMID: 18051954). This antibody detects a 75-85 kDa band.

Notable Publications

Author	Pubmed ID	Journal	Application
Qing Tu	36106559	Cell Prolif	WB
Qi Xie	30843336	J Obstet Gynaecol Res	WB
Kejia Zhao	29329362	Acta Biochim Biophys Sin (Shanghai)	WB

Storage

Storage:

Store at -20°C. Stable for one year after shipment.

Storage Buffer:

PBS with 0.02% sodium azide and 50% glycerol pH 7.3.

Aliquoting is unnecessary for -20°C storage

For technical support and original validation data for this product please contact:

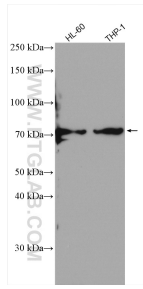
T: 4006900926

E: Proteintech-CN@ptglab.com

W: ptgcn.com

This product is exclusively available under Proteintech Group brand and is not available to purchase from any other manufacturer.

Selected Validation Data



Various lysates were subjected to SDS PAGE followed by western blot with 14482-1-AP (SIRP alpha antibody) at dilution of 1:500 incubated at room temperature for 1.5 hours.