

# LCOR Polyclonal antibody

Catalog Number: 14476-1-AP

## Basic Information

**Catalog Number:**

14476-1-AP

**Size:**

133 µg/ml

**Source:**

Rabbit

**Isotype:**

IgG

**Immunogen Catalog Number:**

AG5851

**GenBank Accession Number:**

BC053359

**GeneID (NCBI):**

84458

**UNIPROT ID:**

Q96JNO

**Full Name:**

ligand dependent nuclear receptor  
corepressor

**Calculated MW:**

47 kDa

**Observed MW:**

50 kDa

**Purification Method:**

Antigen affinity purification

**Recommended Dilutions:**

WB 1:200-1:1000

IHC 1:20-1:200

IF/ICC 1:50-1:500

## Applications

**Tested Applications:**

WB, IHC, IF/ICC, ELISA

**Species Specificity:**

human, mouse, rat

**Note-IHC: suggested antigen retrieval with  
TE buffer pH 9.0; (\*) Alternatively, antigen  
retrieval may be performed with citrate  
buffer pH 6.0**

**Positive Controls:**

WB : HeLa cells,

IHC : human endometrial cancer tissue,

IF/ICC : HeLa cells,

## Background Information

LCOR is a transcriptional corepressor widely expressed in fetal and adult tissues that is recruited to agonist-bound nuclear receptors through a single LxxLL motif, also referred to as a nuclear receptor (NR) box [PMID:12535528]. It functions through recruitment of C-terminal binding proteins (CtBPs) and histone deacetylases (HDACs) to its N-terminal and central domains, respectively [PMID:22277651]. It is a scaffold for both histone deacetylases (HDACs) and C-terminal binding protein (CtBP) corepressors and functions by both HDAC-dependent and -independent mechanisms in a receptor-specific manner [PMID:19744932].

## Storage

**Storage:**

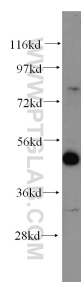
Store at -20°C. Stable for one year after shipment.

**Storage Buffer:**

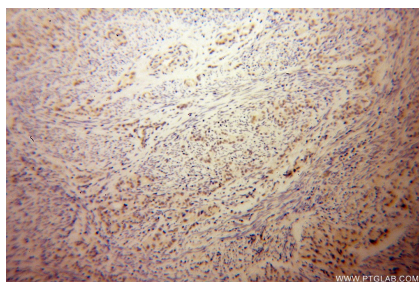
PBS with 0.02% sodium azide and 50% glycerol pH 7.3.

Aliquoting is unnecessary for -20°C storage

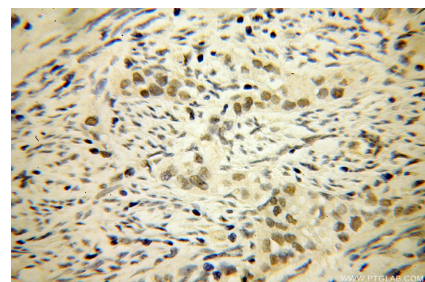
## Selected Validation Data



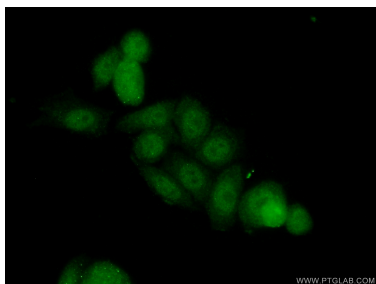
HeLa cells were subjected to SDS PAGE followed by western blot with 14476-1-AP (LCOR antibody) at dilution of 1:300 incubated at room temperature for 1.5 hours.



Immunohistochemical analysis of paraffin-embedded human endometrial cancer using 14476-1-AP (LCOR antibody) at dilution of 1:50 (under 10x lens).



Immunohistochemical analysis of paraffin-embedded human endometrial cancer using 14476-1-AP (LCOR antibody) at dilution of 1:50 (under 40x lens).



Immunofluorescent analysis of (10% Formaldehyde) fixed HeLa cells using 14476-1-AP (LCOR antibody) at dilution of 1:50 and Alexa Fluor 488-conjugated AffiniPure Goat Anti-Rabbit IgG(H+L).