

For Research Use Only

PARVB Polyclonal antibody

Catalog Number: 14463-1-AP

Featured Product

6 Publications



Basic Information

Catalog Number:

14463-1-AP

Size:

600 µg/ml

Source:

Rabbit

Isotype:

IgG

Immunogen Catalog Number:

AG5760

GenBank Accession Number:

BC046103

GeneID (NCBI):

29780

UNIPROT ID:

Q9HBI1

Full Name:

parvin, beta

Calculated MW:

42 kDa

Observed MW:

42 kDa and 45 kDa

Purification Method:

Antigen affinity purification

Recommended Dilutions:

WB 1:5000-1:50000

IF 1:200-1:800

Applications

Tested Applications:

IF/ICC, WB, ELISA

Cited Applications:

WB

Species Specificity:

mouse, human, rat

Cited Species:

human, mouse

Positive Controls:

WB : HeLa cells, mouse spleen tissue, mouse heart tissue, rat heart tissue

IF : HeLa cells,

Background Information

Notable Publications

Author	Pubmed ID	Journal	Application
Katharina Rothe	32413332	Cell Stem Cell	WB
Nicholas Rooney	27019299	J Cell Physiol	WB
Linbin Yang	32528174	Nature	WB

Storage

Storage:

Store at -20°C. Stable for one year after shipment.

Storage Buffer:

PBS with 0.02% sodium azide and 50% glycerol pH 7.3.

Aliquoting is unnecessary for -20°C storage

For technical support and original validation data for this product please contact:

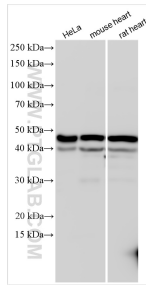
T: 4006900926

E: Proteintech-CN@ptglab.com

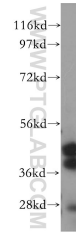
W: ptgcn.com

This product is exclusively available under Proteintech Group brand and is not available to purchase from any other manufacturer.

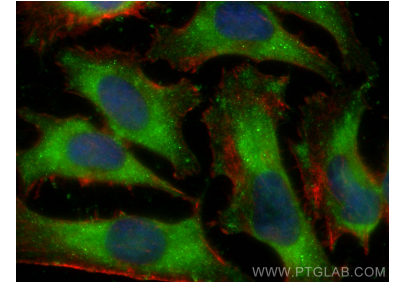
Selected Validation Data



Various lysates were subjected to SDS PAGE followed by western blot with 14463-1-AP (PARVB antibody) at dilution of 1:10000 incubated at room temperature for 1.5 hours.



mouse spleen tissue were subjected to SDS PAGE followed by western blot with 14463-1-AP (PARVB antibody) at dilution of 1:100 incubated at room temperature for 1.5 hours.



Immunofluorescent analysis of (-20°C Ethanol) fixed HeLa cells using PARVB antibody (14463-1-AP) at dilution of 1:400 and Coralite@488-Conjugated AffiniPure Goat Anti-Rabbit IgG(H+L), CL594-Phalloidin (red).