

For Research Use Only

KLHL2 Polyclonal antibody, PBS Only

Catalog Number: 14449-1-PBS



Basic Information

Catalog Number: 14449-1-PBS	GenBank Accession Number: BC022503	Purification Method: Antigen affinity purification
Size: 1 mg/ml	GeneID (NCBI): 11275	
Source: Rabbit	UNIPROT ID: O95198	
Isotype: IgG	Full Name: kelch-like 2, Mayven (Drosophila)	
Immunogen Catalog Number: AG5950	Calculated MW: 66 kDa	
	Observed MW: 66 kDa	

Applications

Tested Applications:
WB, IF/ICC, Indirect ELISA

Species Specificity:
human, mouse, rat

Background Information

KLHL2 contains an SH3-binding domain in the N terminus and a POZ domain and 6 tandem repeats of approximately 50 amino acids each in the C terminus. In astrocytoma/glioblastoma cells, KLHL2 colocalized with actin filaments in the cytoskeleton remodeling regions in stress fibers and in patchy cortical actin-rich regions of the cell margins. In primary rat hippocampal neurons, it was highly expressed in the cell body and in neurite processes (PMID: 10397770).

Storage

Storage:
Store at -80°C.
The product is shipped with ice packs. Upon receipt, store it immediately at -80°C

Storage Buffer:
PBS Only

For technical support and original validation data for this product please contact:

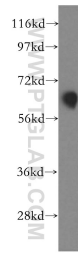
T: 4006900926

E: Proteintech-CN@ptglab.com

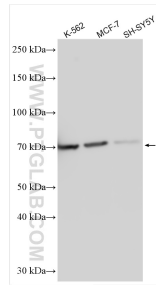
W: ptgcn.com

This product is exclusively available under Proteintech Group brand and is not available to purchase from any other manufacturer.

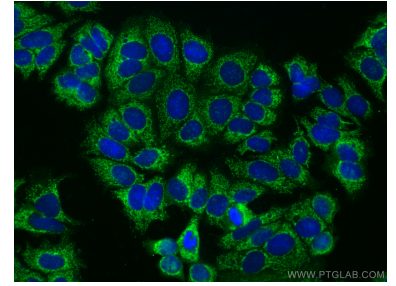
Selected Validation Data



MCF7 cells were subjected to SDS PAGE followed by western blot with 14449-1-AP (KLHL2 antibody) at dilution of 1:500 incubated at room temperature for 1.5 hours. This data was developed using the same antibody clone with 14449-1-PBS in a different storage buffer formulation.



Various lysates were subjected to SDS PAGE followed by western blot with 14449-1-AP (KLHL2 antibody) at dilution of 1:10000 incubated at room temperature for 1.5 hours. This data was developed using the same antibody clone with 14449-1-PBS in a different storage buffer formulation.



Immunofluorescent analysis of (-20°C Methanol) fixed MCF-7 cells using KLHL2 antibody (14449-1-AP) at dilution of 1:400 and CoraLite®488-Conjugated AffiniPure Goat Anti-Rabbit IgG(H+L) (SA00013-2). This data was developed using the same antibody clone with 14449-1-PBS in a different storage buffer formulation.