

For Research Use Only

PPME1 Polyclonal antibody, PBS Only

Catalog Number: 14435-1-PBS



Basic Information

Catalog Number:

14435-1-PBS

Concentration:

1 mg/ml

Source:

Rabbit

Isotype:

IgG

Immunogen Catalog Number:

AG5817

GenBank Accession Number:

BC050705

GeneID (NCBI):

51400

UNIPROT ID:

Q9Y570

Full Name:

protein phosphatase methyltransferase

1

Calculated MW:

42 kDa

Observed MW:

44 kDa

Purification Method:

Antigen affinity purification

Applications

Tested Applications:

WB, IHC, Indirect ELISA

Species Specificity:

human, mouse, rat

Background Information

PPME1 (Protein phosphatase methyltransferase 1) is a protein phosphatase 2A (PP2A)-specific methyl transferase that negatively regulates PP2A through demethylation at its carboxy terminal leucine 309 residue (PMID: 24253382). PPME1 plays an important role in the development of cancers and may be a biomarker for pancreatic carcinoma, gastric and lung cancer (PMID: 32351291).

Storage

Storage:

Store at -80°C.

The product is shipped with ice packs. Upon receipt, store it immediately at -80°C

Storage Buffer:

PBS only, pH7.3

For technical support and original validation data for this product please contact:

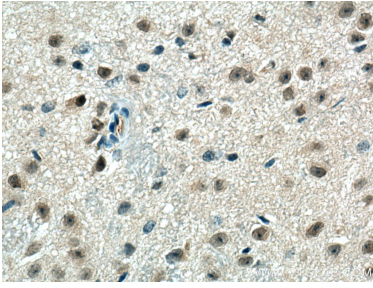
T: 4006900926

E: Proteintech-CN@ptglab.com

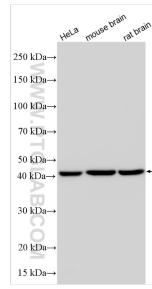
W: ptgcn.com

This product is exclusively available under Proteintech Group brand and is not available to purchase from any other manufacturer.

Selected Validation Data



Immunohistochemical analysis of paraffin-embedded mouse brain tissue slide using 14435-1-AP (PPME1 antibody) at dilution of 1:200 (under 40x lens). Heat mediated antigen retrieval with Tris-EDTA buffer (pH 9.0). This data was developed using the same antibody clone with 14435-1-PBS in a different storage buffer formulation.



Various lysates were subjected to SDS PAGE followed by western blot with 14435-1-AP (PPME1 antibody) at dilution of 1:6000 incubated at room temperature for 1.5 hours. This data was developed using the same antibody clone with 14435-1-PBS in a different storage buffer formulation.