

For Research Use Only

# RBM10 Polyclonal antibody

Catalog Number: 14423-1-AP

Featured Product

8 Publications



## Basic Information

**Catalog Number:**

14423-1-AP

**Size:**

850 µg/ml

**Source:**

Rabbit

**Isotype:**

IgG

**Immunogen Catalog Number:**

AG5788

**GenBank Accession Number:**

BC024153

**GeneID (NCBI):**

8241

**UNIPROT ID:**

P98175

**Full Name:**

RNA binding motif protein 10

**Calculated MW:**

104 kDa

**Observed MW:**

115 kDa

**Purification Method:**

Antigen affinity purification

**Recommended Dilutions:**

WB 1:500-1:2000

IP 0.5-4.0 µg for 1.0-3.0 mg of total protein lysate

IF 1:50-1:500

## Applications

**Tested Applications:**

IF-P, IP, WB, ELISA

**Cited Applications:**

WB, IP, IF, RIP, IHC, CoIP

**Species Specificity:**

human, mouse, rat

**Cited Species:**

human

**Positive Controls:**

WB : human brain tissue,

IP : mouse brain tissue,

IF : mouse brain tissue,

## Background Information

RBM10, also named as RNA-binding protein 10, is a 930 amino acid protein, which is in the extranucleolar nucleoplasm constitutes hundreds of nuclear domains, which dynamically change their structures in a reversible manner. RBM10 may be involved in post-transcriptional processing, most probably in mRNA splicing. RBM10 has some isoforms with MV 130 and 115 kDa (PMID: 25889998 and PMID: 18315527).

## Notable Publications

Author	Pubmed ID	Journal	Application
Ji Hoon Jung	31591476	Oncogene	WB
Shan Cong	36335386	Cancer Cell Int	WB,IHC,RIP
Leslie C Sutherland	28728573	BMC Mol Biol	WB

## Storage

**Storage:**

Store at -20°C. Stable for one year after shipment.

**Storage Buffer:**

PBS with 0.02% sodium azide and 50% glycerol pH 7.3.

Aliquoting is unnecessary for -20°C storage

For technical support and original validation data for this product please contact:

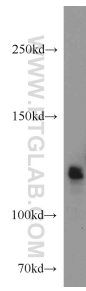
T: 4006900926

E: Proteintech-CN@ptglab.com

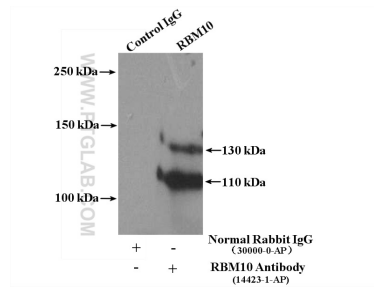
W: ptgcn.com

**This product is exclusively available under Proteintech Group brand and is not available to purchase from any other manufacturer.**

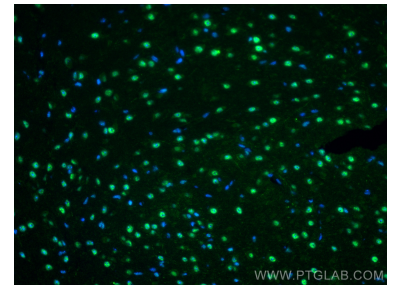
## Selected Validation Data



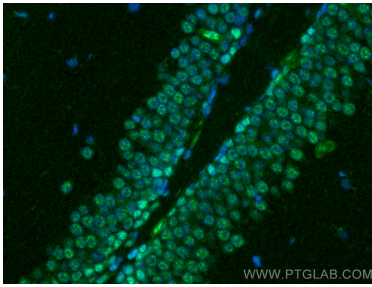
human brain tissue were subjected to SDS PAGE followed by western blot with 14423-1-AP (RBM10 antibody) at dilution of 1:1000 incubated at room temperature for 1.5 hours.



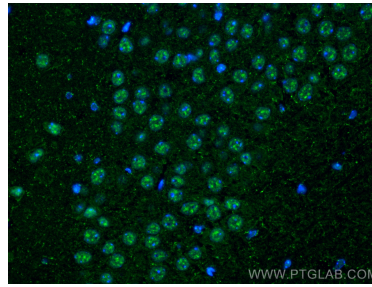
IP result of anti-RBM10 (IP:14423-1-AP, 4ug; Detection:14423-1-AP 1:800) with mouse brain tissue lysate 4000ug.



Immunofluorescent analysis of (4% PFA) fixed mouse brain tissue using RBM10 antibody (14423-1-AP) at dilution of 1:200 and Coralite@488-Conjugated AffiniPure Goat Anti-Rabbit IgG(H+L).



Immunofluorescent analysis of (4% PFA) fixed mouse brain tissue using RBM10 antibody (14423-1-AP) at dilution of 1:200 and Coralite@488-Conjugated AffiniPure Goat Anti-Rabbit IgG(H+L).



Immunofluorescent analysis of (4% PFA) fixed mouse brain tissue using RBM10 antibody (14423-1-AP) at dilution of 1:200 and Coralite@488-Conjugated AffiniPure Goat Anti-Rabbit IgG(H+L).