

For Research Use Only

TIMELESS Polyclonal antibody

Catalog Number: 14421-1-AP

Featured Product

8 Publications



Basic Information

Catalog Number:

14421-1-AP

Concentration:

500 µg/ml

Source:

Rabbit

Isotype:

IgG

Immunogen Catalog Number:

AG5767

GenBank Accession Number:

BC050557

GeneID (NCBI):

8914

UNIPROT ID:

Q9UNS1

Full Name:

timeless homolog (Drosophila)

Calculated MW:

139 kDa

Observed MW:

140-150 kDa

Purification Method:

Antigen affinity purification

Recommended Dilutions:

WB: 1:1000-1:4000

IHC: 1:20-1:200

IF/ICC: 1:50-1:500

Applications

Tested Applications:

WB, IHC, IF/ICC, ELISA

Cited Applications:

WB, IHC

Species Specificity:

human, mouse

Cited Species:

human, mouse

Note-IHC: suggested antigen retrieval with TE buffer pH 9.0; (*) Alternatively, antigen retrieval may be performed with citrate buffer pH 6.0

Positive Controls:

WB: HEK-293 cells, NIH/3T3 cells, A549 cells, HeLa cells, Jurkat cells, RAW 264.7 cells

IHC: human spleen tissue, human brain tissue, human heart tissue, human kidney tissue, human ovary tissue, human placenta tissue, human testis tissue

IF/ICC: HeLa cells,

Background Information

TIMELESS1 (TIM1) gene encodes protein timeless homolog belonging to timeless family. TIM1 is localized in nucleus and regulated by cell cycle. It expresses high levels in S, G2 and M phases, and low in G0 and G1 phases. TIM1 is involved in the circadian rhythm autoregulatory loop and is a crucial component of the circadian core oscillator, which includes the CRY proteins, CLOCK, NPAS2, etc. It is also involved in cell survival after DNA damage or replication stress and reported to play important role in epithelial cell morphogenesis and formation of branching tubules.

Notable Publications

Author	Pubmed ID	Journal	Application
Fangfang Li	35715407	Cell Death Dis	WB
Sai-Lan Liu	28583847	Cancer Lett	WB, IHC
Zeyu Wang	33442944	Cell Prolif	WB

Storage

Storage:

Store at -20°C. Stable for one year after shipment.

Storage Buffer:

PBS with 0.02% sodium azide and 50% glycerol, pH7.3

Aliquoting is unnecessary for -20°C storage

For technical support and original validation data for this product please contact:

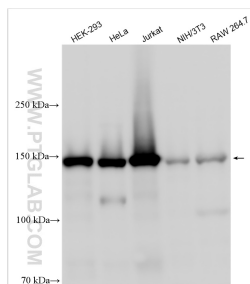
T: 4006900926

E: Proteintech-CN@ptglab.com

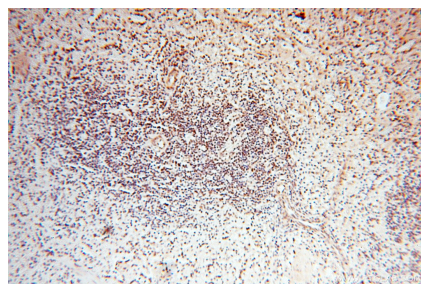
W: ptgcn.com

This product is exclusively available under Proteintech Group brand and is not available to purchase from any other manufacturer.

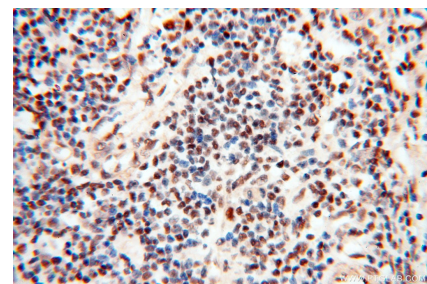
Selected Validation Data



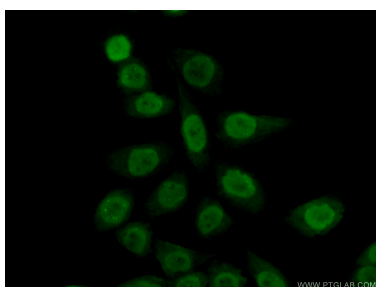
Various lysates were subjected to SDS PAGE followed by western blot with 14421-1-AP (TIMELESS antibody) at dilution of 1:2000 incubated at room temperature for 1.5 hours.



Immunohistochemical analysis of paraffin-embedded human spleen using 14421-1-AP (TIMELESS antibody) at dilution of 1:50 (under 10x lens).



Immunohistochemical analysis of paraffin-embedded human spleen using 14421-1-AP (TIMELESS antibody) at dilution of 1:50 (under 40x lens).



Immunofluorescent analysis of (10% Formaldehyde) fixed HeLa cells using 14421-1-AP (TIMELESS antibody) at dilution of 1:50 and Alexa Fluor 488-conjugated Goat Anti-Rabbit IgG(H+L).