

For Research Use Only

# CHSY1 Polyclonal antibody, PBS Only

Catalog Number: 14420-1-PBS

Featured Product



## Basic Information

Catalog Number:

14420-1-PBS

Size:

1 mg/ml

Source:

Rabbit

Isotype:

IgG

Immunogen Catalog Number:

AG5766

GenBank Accession Number:

BC046247

GeneID (NCBI):

22856

UNIPROT ID:

Q86X52

Full Name:

chondroitin sulfate synthase 1

Calculated MW:

92 kDa

Observed MW:

60-92 kDa

Purification Method:

Antigen affinity purification

## Applications

Tested Applications:

WB, IHC, Indirect ELISA

Species Specificity:

human, mouse

## Background Information

### Storage

Storage:

Store at -80°C.

The product is shipped with ice packs. Upon receipt, store it immediately at -80°C

Storage Buffer:

PBS Only

For technical support and original validation data for this product please contact:

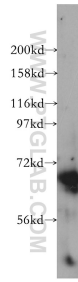
T: 4006900926

E: [Proteintech-CN@ptglab.com](mailto:Proteintech-CN@ptglab.com)

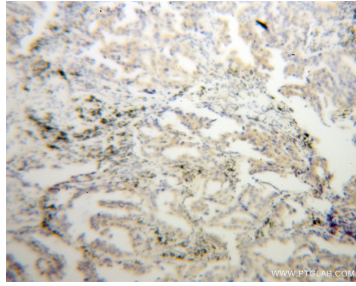
W: [ptgcn.com](http://ptgcn.com)

This product is exclusively available under Proteintech Group brand and is not available to purchase from any other manufacturer.

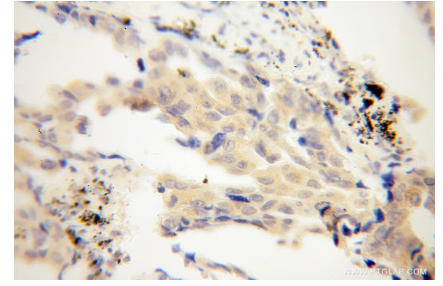
## Selected Validation Data



mouse spleen tissue were subjected to SDS PAGE followed by western blot with 14420-1-AP (CHSY1 antibody) at dilution of 1:500 incubated at room temperature for 1.5 hours. This data was developed using the same antibody clone with 14420-1-PBS in a different storage buffer formulation.



Immunohistochemical analysis of paraffin-embedded human lung cancer using 14420-1-AP (CHSY1 antibody) at dilution of 1:100 (under 10x lens). This data was developed using the same antibody clone with 14420-1-PBS in a different storage buffer formulation.



Immunohistochemical analysis of paraffin-embedded human lung cancer using 14420-1-AP (CHSY1 antibody) at dilution of 1:100 (under 40x lens). This data was developed using the same antibody clone with 14420-1-PBS in a different storage buffer formulation.