

For Research Use Only

MOCS2B Polyclonal antibody

Catalog Number: 14416-1-AP



Basic Information

Catalog Number:

14416-1-AP

Size:

600 µg/ml

Source:

Rabbit

Isotype:

IgG

Immunogen Catalog Number:

AG5761

GenBank Accession Number:

BC046097

GeneID (NCBI):

4338

UNIPROT ID:

O96033

Full Name:

molybdenum cofactor synthesis 2

Calculated MW:

21 kDa

Observed MW:

21 kDa

Purification Method:

Antigen affinity purification

Recommended Dilutions:

WB 1:500-1:2000

IF/ICC 1:20-1:200

Applications

Tested Applications:

WB, IF/ICC, ELISA

Species Specificity:

human, mouse, rat

Positive Controls:

WB : HeLa cells, HepG2 cells, Jurkat cells, mouse heart tissue

IF/ICC : HeLa cells,

Background Information

Storage

Storage:

Store at -20°C. Stable for one year after shipment.

Storage Buffer:

PBS with 0.02% sodium azide and 50% glycerol pH 7.3.

Aliquoting is unnecessary for -20°C storage

For technical support and original validation data for this product please contact:

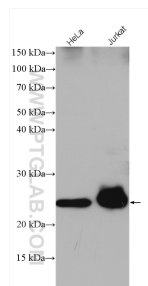
T: 4006900926

E: Proteintech-CN@ptglab.com

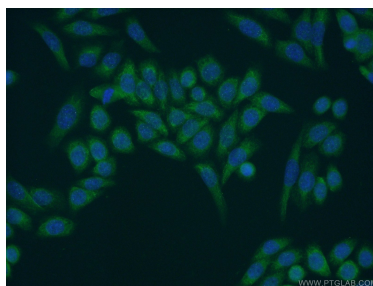
W: ptgcn.com

This product is exclusively available under Proteintech Group brand and is not available to purchase from any other manufacturer.

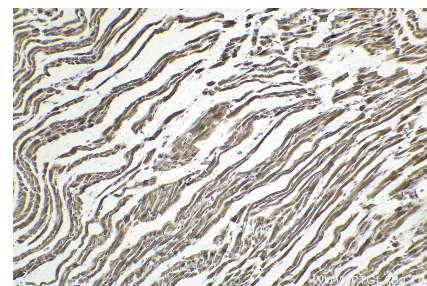
Selected Validation Data



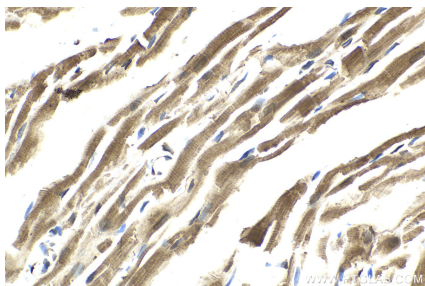
Various lysates were subjected to SDS PAGE followed by western blot with 14416-1-AP (MOCS2 antibody) at dilution of 1:800 incubated at room temperature for 1.5 hours.



Immunofluorescent analysis of HeLa cells using 14416-1-AP (MOCS2 antibody) at dilution of 1:50 and Alexa Fluor 488-conjugated Goat Anti-Rabbit IgG(H+L).



Immunohistochemical analysis of paraffin-embedded rat heart tissue slide using 14416-1-AP (MOCS2B antibody) at dilution of 1:200 (under 10x lens). Heat mediated antigen retrieval with Tris-EDTA buffer (pH 9.0).



Immunohistochemical analysis of paraffin-embedded rat heart tissue slide using 14416-1-AP (MOCS2B antibody) at dilution of 1:200 (under 40x lens). Heat mediated antigen retrieval with Tris-EDTA buffer (pH 9.0).