

For Research Use Only

GALE Polyclonal antibody

Catalog Number: 14414-1-AP

Featured Product

4 Publications



Basic Information

Catalog Number:

14414-1-AP

Size:

233 µg/ml

Source:

Rabbit

Isotype:

IgG

Immunogen Catalog Number:

AG5756

GenBank Accession Number:

BC050685

GeneID (NCBI):

2582

UNIPROT ID:

Q14376

Full Name:

UDP-galactose-4-epimerase

Calculated MW:

38 kDa

Observed MW:

38 kDa

Purification Method:

Antigen affinity purification

Recommended Dilutions:

WB 1:200-1:1000

IP 0.5-4.0 µg for 1.0-3.0 mg of total protein lysate

IHC 1:20-1:200

IF 1:50-1:500

Applications

Tested Applications:

IF/ICC, IHC, IP, WB, ELISA

Cited Applications:

WB, IHC

Species Specificity:

human, mouse

Cited Species:

human, rat

Note-IHC: suggested antigen retrieval with TE buffer pH 9.0; (*) Alternatively, antigen retrieval may be performed with citrate buffer pH 6.0

Positive Controls:

WB : A375 cells, HeLa cells, MCF-7 cells

IP : HeLa cells,

IHC : human malignant melanoma tissue,

IF : HeLa cells,

Background Information

GALE(Galactowaldenase) is also named as UDP-glucose 4-epimerase, UDP-galactose 4-epimerase, and belongs to the sugar epimerase family. UDP-galactose 4-epimerase catalyzes the interconversion of UDP-glucose and UDP-galactose during normal galactose metabolism. In humans, deficiencies in this enzyme lead to the complex disorder referred to as epimerase-deficiency galactosemia(PMID:10801319).It can exist as a homodimer(PMID:8931134).

Notable Publications

Author	Pubmed ID	Journal	Application
Yinxian Wen	25202993	PLoS One	WB, IHC
Yinxian Wen	25201731	Biochem Biophys Res Commun	WB, IHC
Yan Wang	32903891	Infect Drug Resist	WB

Storage

Storage:

Store at -20°C. Stable for one year after shipment.

Storage Buffer:

PBS with 0.02% sodium azide and 50% glycerol pH 7.3.

Aliquoting is unnecessary for -20°C storage

For technical support and original validation data for this product please contact:

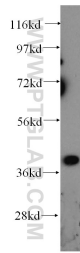
T: 4006900926

E: Proteintech-CN@ptglab.com

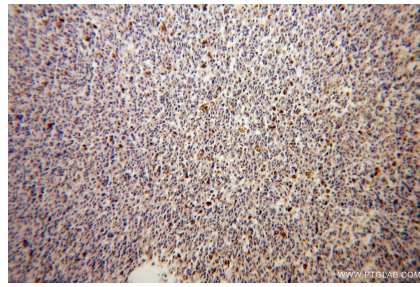
W: ptgcn.com

This product is exclusively available under Proteintech Group brand and is not available to purchase from any other manufacturer.

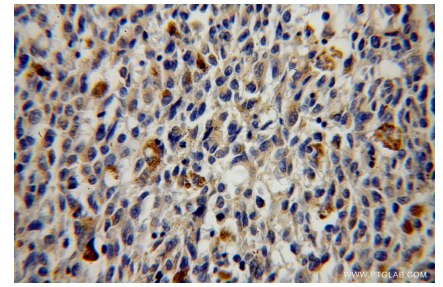
Selected Validation Data



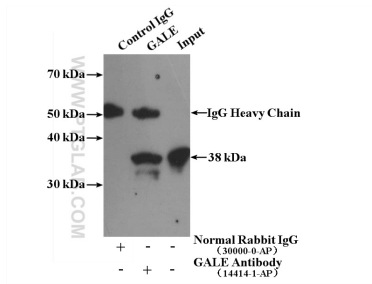
A375 cells were subjected to SDS PAGE followed by western blot with 14414-1-AP (GALE antibody) at dilution of 1:300 incubated at room temperature for 1.5 hours.



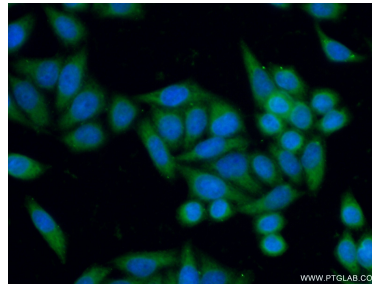
Immunohistochemical analysis of paraffin-embedded human malignant melanoma using 14414-1-AP (GALE antibody) at dilution of 1:100 (under 10x lens).



Immunohistochemical analysis of paraffin-embedded human malignant melanoma using 14414-1-AP (GALE antibody) at dilution of 1:100 (under 40x lens).



IP result of anti-GALE (IP:14414-1-AP, 4ug; Detection:14414-1-AP 1:300) with HeLa cells lysate 1080ug.



Immunofluorescent analysis of (-20°C Ethanol) fixed HeLa cells using 14414-1-AP (GALE antibody) at dilution of 1:50 and Alexa Fluor 488-conjugated AffiniPure Goat Anti-Rabbit IgG(H+L).