

For Research Use Only

PIBF1 Polyclonal antibody

Catalog Number: 14413-1-AP

Featured Product

7 Publications



Basic Information

Catalog Number:

14413-1-AP

Size:

600 ug/ml

Source:

Rabbit

Isotype:

IgG

Immunogen Catalog Number:

AG5755

GenBank Accession Number:

BC051911

GeneID (NCBI):

10464

UNIPROT ID:

Q8WXW3

Full Name:

progesterone immunomodulatory
binding factor 1

Calculated MW:

90 kDa

Observed MW:

90 kDa

Purification Method:

Antigen affinity purification

Recommended Dilutions:

WB 1:1000-1:6000

IP 0.5-4.0 ug for 1.0-3.0 mg of total
protein lysate

IHC 1:50-1:500

IF/ICC 1:200-1:800

Applications

Tested Applications:

WB, IHC, IF/ICC, IP, ELISA

Cited Applications:

WB, IF, IP

Species Specificity:

human

Cited Species:

human

**Note-IHC: suggested antigen retrieval with
TE buffer pH 9.0; (*) Alternatively, antigen
retrieval may be performed with citrate
buffer pH 6.0**

Positive Controls:

WB : HEK-293 cells, MCF-7 cells, K-562 cells, HeLa cells

IP : HEK-293 cells,

IHC : human intrahepatic cholangiocarcinoma tissue,

IF/ICC : HEK-293 cells,

Background Information

PIBF1 is induced by the steroid hormone progesterone and plays a role in the maintenance of pregnancy. PIBF1 regulates multiple facets of the immune system to promote normal pregnancy including cytokine synthesis, natural killer (NK) cell activity, and arachidonic acid metabolism. Low serum levels of this protein have been associated with spontaneous pre-term labor in humans. PIBF1 may promote the proliferation, migration and invasion of glioma.

Notable Publications

Author	Pubmed ID	Journal	Application
Marine H Laporte	36125182	EMBO J	IF
Pierrick Le Borgne	36070319	PLoS Biol	IF
Dhivya Kumar	34241634	J Cell Biol	WB

Storage

Storage:

Store at -20°C. Stable for one year after shipment.

Storage Buffer:

PBS with 0.02% sodium azide and 50% glycerol pH 7.3.

Aliquoting is unnecessary for -20°C storage

For technical support and original validation data for this product please contact:

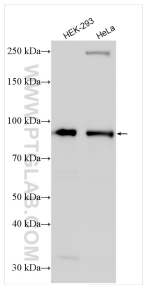
T: 4006900926

E: Proteintech-CN@ptglab.com

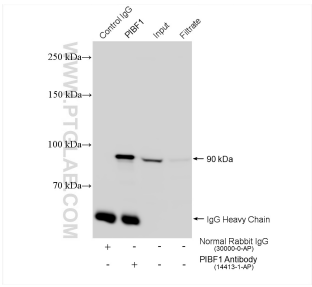
W: ptgcn.com

This product is exclusively available under Proteintech Group brand and is not available to purchase from any other manufacturer.

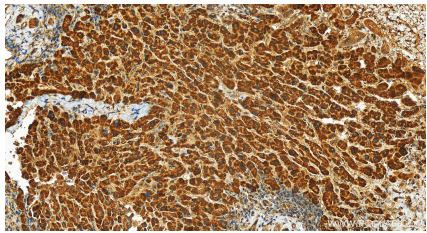
Selected Validation Data



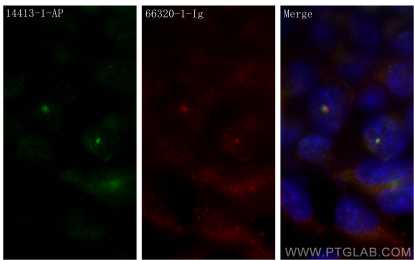
Various lysates were subjected to SDS PAGE followed by western blot with 14413-1-AP (PIBF1 antibody) at dilution of 1:3000 incubated at room temperature for 1.5 hours.



IP result of anti-PIBF1 (IP:14413-1-AP, 4ug; Detection:14413-1-AP 1:1000) with HEK-293 cells lysate 1400 ug.



Immunohistochemical analysis of paraffin-embedded human intrahepatic cholangiocarcinoma tissue slide using 14413-1-AP (PIBF1 antibody) at dilution of 1:200 (under 20x lens). Heat mediated antigen retrieval with Tris-EDTA buffer (pH 9.0).



Immunofluorescent analysis of (-20°C Methanol) fixed HEK-293 cells using PIBF1 antibody (14413-1-AP) at dilution of 1:400 and CoraLite®488-Conjugated Goat Anti-Rabbit IgG(H+L), Gamma Tubulin antibody (66320-1-Ig, Clone: 3F9H8, red).