

For Research Use Only

PEG10 Polyclonal antibody

Catalog Number: 14412-1-AP **9 Publications**



Basic Information

Catalog Number: 14412-1-AP	GenBank Accession Number: BC050659	Purification Method: Antigen affinity purification
Concentration: 850 ug/ml	GeneID (NCBI): 23089	Recommended Dilutions: WB 1:500-1:3000 IHC 1:500-1:2000 IF/ICC 1:200-1:800
Source: Rabbit	UNIPROT ID: Q86TG7	
Isotype: IgG	Full Name: paternally expressed 10	
Immunogen Catalog Number: AG5754	Calculated MW: 80 kDa	
	Observed MW: 50 kDa, 100 kDa	

Applications

Tested Applications: WB, IHC, IF/ICC, ELISA	Positive Controls: WB : HepG2 cells, L02 cells, PC-13 cells, mouse liver tissue IHC : mouse skin tissue, IF/ICC : HeLa cells,
Cited Applications: WB, IHC, IF, ColP	
Species Specificity: human, mouse	
Cited Species: human	
Note-IHC: suggested antigen retrieval with TE buffer pH 9.0; (*) Alternatively, antigen retrieval may be performed with citrate buffer pH 6.0	

Background Information

Notable Publications

Author	Pubmed ID	Journal	Application
Hugo Gonzalez	35063085	Cell	IHC,IF
Bin Zhang	34876700	Acta Pharmacol Sin	WB
Will Campodonico	39775359	PLoS One	WB,ColP

Storage

Storage:
Store at -20°C. Stable for one year after shipment.
Storage Buffer:
PBS with 0.02% sodium azide and 50% glycerol pH 7.3.
Aliquoting is unnecessary for -20°C storage

For technical support and original validation data for this product please contact:

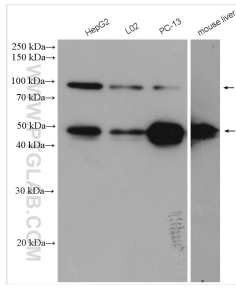
T: 4006900926

E: Proteintech-CN@ptglab.com

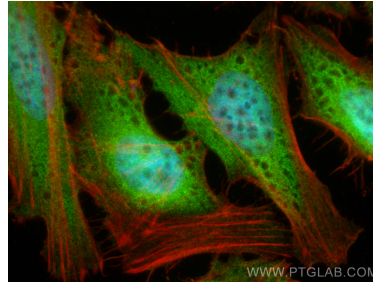
W: ptgcn.com

This product is exclusively available under Proteintech Group brand and is not available to purchase from any other manufacturer.

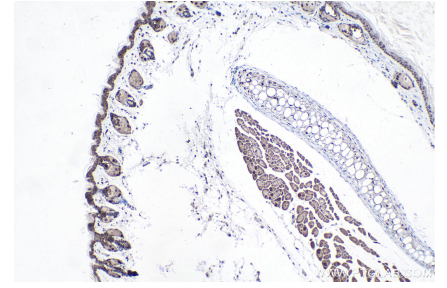
Selected Validation Data



Various lysates were subjected to SDS PAGE followed by western blot with 14412-1-AP (PEG10 antibody) at dilution of 1:1500 incubated at room temperature for 1.5 hours.



Immunofluorescent analysis of (4% PFA) fixed HeLa cells using PEG10 antibody (14412-1-AP) at dilution of 1:400 and CoraLite®488-Conjugated AffiniPure Goat Anti-Rabbit IgG(H+L), CL594-Phalloidin (red).



Immunohistochemical analysis of paraffin-embedded mouse skin tissue slide using 14412-1-AP (PEG10 antibody) at dilution of 1:1000 (under 10x lens). Heat mediated antigen retrieval with Tris-EDTA buffer (pH 9.0).