

For Research Use Only

TAB2 Polyclonal antibody

Catalog Number: 14410-1-AP

Featured Product

20 Publications



Basic Information

Catalog Number:

14410-1-AP

Concentration:

600 µg/ml

Source:

Rabbit

Isotype:

IgG

Immunogen Catalog Number:

AG5742

GenBank Accession Number:

BC035910

GeneID (NCBI):

23118

UNIPROT ID:

Q9NYJ8

Full Name:

mitogen-activated protein kinase
kinase kinase 7 interacting protein 2

Calculated MW:

76 kDa

Observed MW:

77 kDa

Purification Method:

Antigen affinity purification

Recommended Dilutions:

WB 1:1000-1:4000

IP 0.5-4.0 µg for 1.0-3.0 mg of total
protein lysate

IHC 1:20-1:200

IF/ICC 1:20-1:200

Applications

Tested Applications:

WB, IHC, IF/ICC, IP, ELISA

Cited Applications:

WB, IHC, IF

Species Specificity:

human, mouse, rat

Cited Species:

human, mouse, rat, pig

**Note-IHC: suggested antigen retrieval with
TE buffer pH 9.0; (*) Alternatively, antigen
retrieval may be performed with citrate
buffer pH 6.0**

Positive Controls:

WB : L02 cells, C6 cells, human liver tissue, HepG2
cells, mouse liver tissue, rat liver tissue, Raji cells

IP : HepG2 cells,

IHC : human malignant melanoma tissue,

IF/ICC : HepG2 cells,

Background Information

Tab2 has a role in the inflammatory signal transduction pathway and is involved in the reversal of NCoR-dependent and NFkB- or APP-mediated gene repression and androgen antagonist response. Besides, it is identified as a cofactor for ERBB4 to assemble NCoR corepressor complex in response to neuregulin [PMID:16469706]. It also functions as an adaptor that links TAK1 and TRAF6 in response to interleukin-1 β (IL-1 β) or tumour necrosis factor- α (TNF- α), and thereby mediates TAK1 activation [PMID:11460167].

Notable Publications

Author	Pubmed ID	Journal	Application
Chunjie Sheng	30348973	Nat Commun	WB
Yanghao Chen	36420902	Phytother Res	WB
Bo Yang	33985523	J Neuroinflammation	WB

Storage

Storage:

Store at -20°C. Stable for one year after shipment.

Storage Buffer:

PBS with 0.02% sodium azide and 50% glycerol pH 7.3.

Aliquoting is unnecessary for -20°C storage

For technical support and original validation data for this product please contact:

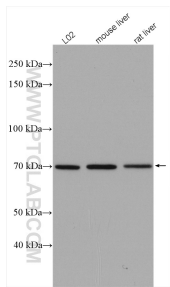
T: 4006900926

E: Proteintech-CN@ptglab.com

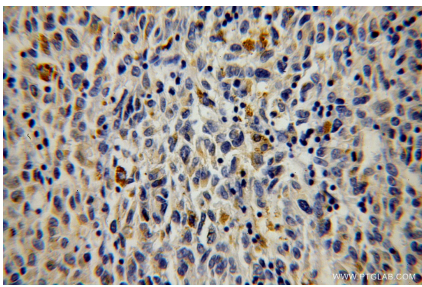
W: ptgcn.com

This product is exclusively available under Proteintech Group brand and is not available to purchase from any other manufacturer.

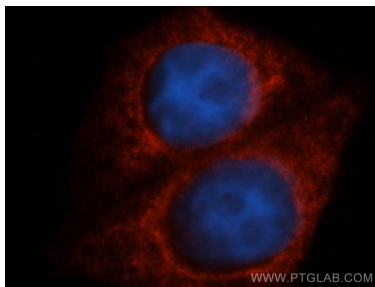
Selected Validation Data



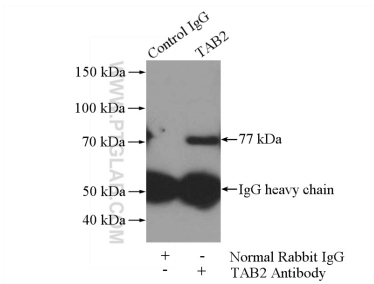
Various lysates were subjected to SDS PAGE followed by western blot with 14410-1-AP (TAB2 antibody) at dilution of 1:2000 incubated at room temperature for 1.5 hours.



Immunohistochemical analysis of paraffin-embedded human malignant melanoma using 14410-1-AP (TAB2 antibody) at dilution of 1:100 (under 40x lens).



Immunofluorescent analysis of HepG2 cells, using MAP3K7IP2 antibody 14410-1-AP at 1:50 dilution and Rhodamine-labeled goat anti-rabbit IgG (red). Blue pseudocolor = DAPI (fluorescent DNA dye).



IP result of anti-TAB2 (IP:14410-1-AP, 4ug; Detection:14410-1-AP 1:600) with HepG2 cells lysate 3600ug.