

For Research Use Only

ITM2A Polyclonal antibody

Catalog Number: 14407-1-AP

Featured Product

2 Publications



Basic Information

Catalog Number:

14407-1-AP

Size:

400 µg/ml

Source:

Rabbit

Isotype:

IgG

Immunogen Catalog Number:

AG5692

GenBank Accession Number:

BC040437

GeneID (NCBI):

9452

UNIPROT ID:

O43736

Full Name:

integral membrane protein 2A

Calculated MW:

30 kDa

Observed MW:

30 kDa

Purification Method:

Antigen affinity purification

Recommended Dilutions:

WB 1:500-1:1000

Applications

Tested Applications:

WB, ELISA

Cited Applications:

WB

Species Specificity:

human, mouse, rat

Cited Species:

mouse

Positive Controls:

WB : mouse Lung tissue,

Background Information

Integral membrane protein 2A (ITM2A) is a single-pass type II membrane protein belonging to a family, which is composed of at least two other members ITM2B and ITM2C. ITM2A can be induced during thymocyte selection and T cell activation. In early stages of differentiation ITM2A may be associated with an inhibition of the initiation of chondrogenesis. Catalog# 14407-1-AP recognises two bands of 30 kDa and 45-48 kDa, and the additional 45-48 kDa band may be due to glycosylation.

Notable Publications

Author	Pubmed ID	Journal	Application
Rui Zhang	33680917	Front Oncol	WB
Stephanie J Davies	28872940	Adipocyte	WB

Storage

Storage:

Store at -20°C. Stable for one year after shipment.

Storage Buffer:

PBS with 0.02% sodium azide and 50% glycerol pH 7.3.

Aliquoting is unnecessary for -20°C storage

For technical support and original validation data for this product please contact:

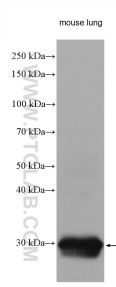
T: 4006900926

E: Proteintech-CN@ptglab.com

W: ptgcn.com

This product is exclusively available under Proteintech Group brand and is not available to purchase from any other manufacturer.

Selected Validation Data



mouse lung tissue were subjected to SDS PAGE followed by western blot with 14407-1-AP (ITM2A antibody) at dilution of 1:600 incubated at room temperature for 1.5 hours.