

For Research Use Only

SCP2/SCPx Polyclonal antibody

Catalog Number: 14397-1-AP

Featured Product

2 Publications



Basic Information

Catalog Number:

14397-1-AP

Size:

600 µg/ml

Source:

Rabbit

Isotype:

IgG

Immunogen Catalog Number:

AG5895

GenBank Accession Number:

BC067108

GeneID (NCBI):

6342

UNIPROT ID:

P22307

Full Name:

sterol carrier protein 2

Calculated MW:

59 kDa

Observed MW:

44-46 kDa, 58 kDa

Purification Method:

Antigen affinity purification

Recommended Dilutions:

WB 1:300-1:1500

IF 1:10-1:100

Applications

Tested Applications:

IF/ICC, WB, ELISA

Cited Applications:

WB

Species Specificity:

human, mouse, rat

Cited Species:

rat, mouse

Positive Controls:

WB : A549 cells, BxPC-3 cells, HepG2 cells, NIH/3T3 cells

IF : BxPC-3 cells,

Background Information

SCP2 (Sterol carrier protein-2), also called nonspecific lipid-transfer protein, is thought to play a major role in intracellular lipid transport and metabolism. Mutations of SCP2 have been associated with diseases involving abnormalities in lipid trafficking, such as Zellweger syndrome. The alternative splicing generates 58 kDa SCPx and 13-15 kDa SCP2 proteins, both of which contain a C-terminal SCP2 domain. In addition to the SCP2 domain, SCPx also contains an amino-terminal thiolase domain. The proteolytic cleavage of SCPx occurred when it was imported into peroxisomes, giving rise to a 44-46 kDa thiolase and a 13-15 kDa SCP2. 14397-1-AP antibody recognizes the intact 58 kDa SCPx protein as well as 44-46 kDa thiolase (PMID: 35996156).

Notable Publications

Author	Pubmed ID	Journal	Application
Vanessa Goyon	37962001	EMBO Rep	WB
Maria J Ferreira	37257275	Redox Biol	WB

Storage

Storage:

Store at -20°C. Stable for one year after shipment.

Storage Buffer:

PBS with 0.02% sodium azide and 50% glycerol pH 7.3.

Aliquoting is unnecessary for -20°C storage

For technical support and original validation data for this product please contact:

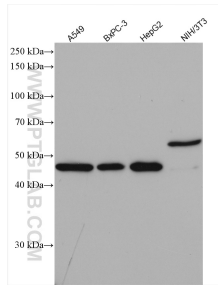
T: 4006900926

E: Proteintech-CN@ptglab.com

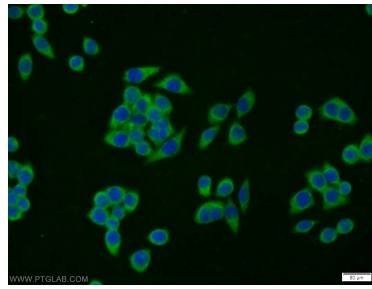
W: ptgcn.com

This product is exclusively available under Proteintech Group brand and is not available to purchase from any other manufacturer.

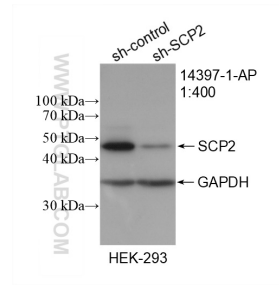
Selected Validation Data



Various lysates were subjected to SDS PAGE followed by western blot with 14397-1-AP (SCP2/SCPx antibody) at dilution of 1:1000 incubated at room temperature for 1.5 hours.



Immunofluorescent analysis of BxPC-3 cells using 14397-1-AP (SCP2 antibody) at dilution of 1:25 and Alexa Fluor 488-conjugated AffiniPure Goat Anti-Rabbit IgG(H+L).



WB result of SCP2/SCPx antibody (14397-1-AP; 1:400; incubated at room temperature for 1.5 hours) with sh-Control and sh-SCP2/SCPx transfected HEK-293 cells.