

For Research Use Only

# MAG Polyclonal antibody

Catalog Number: 14386-1-AP **15 Publications**



## Basic Information

<b>Catalog Number:</b> 14386-1-AP	<b>GenBank Accession Number:</b> BC053347	<b>Purification Method:</b> Antigen affinity purification
<b>Size:</b> 400 µg/ml	<b>GeneID (NCBI):</b> 4099	<b>Recommended Dilutions:</b> WB 1:1000-1:3000
<b>Source:</b> Rabbit	<b>UNIPROT ID:</b> P20916	IHC 1:50-1:500
<b>Isotype:</b> IgG	<b>Full Name:</b> myelin associated glycoprotein	IF 1:50-1:500
<b>Immunogen Catalog Number:</b> AG5845	<b>Calculated MW:</b> 69 kDa	
	<b>Observed MW:</b> 100 kDa	

## Applications

<b>Tested Applications:</b> IF/ICC, IHC, WB, ELISA	<b>Positive Controls:</b> WB : mouse spinal cord tissue, rat brain tissue, mouse brain tissue
<b>Cited Applications:</b> WB, IF	IHC : mouse brain tissue,
<b>Species Specificity:</b> human, mouse, rat	IF : mouse brain tissue,
<b>Cited Species:</b> human, rat, mouse	
<b>Note-IHC: suggested antigen retrieval with TE buffer pH 9.0; (*) Alternatively, antigen retrieval may be performed with citrate buffer pH 6.0</b>	

## Background Information

MAG (myelin associated glycoprotein) is a 100-kDa transmembrane glycoprotein that is a member of the SIGLEC family of proteins. MAG is localized in periaxonal Schwann cell and oligodendroglial membranes of myelin sheaths where it functions in glia-axon interactions (PMID: 17241126). It is a functional ligand for the Nogo-66 receptor (PMID: 12089450). MAG is a cell adhesion molecule for postnatal neural development and is thought to be involved in the process of myelination.

## Notable Publications

Author	Pubmed ID	Journal	Application
Jie Cao	34704235	Neurosci Bull	IF
Yao Wang	36302461	Mol Cell Neurosci	IF, WB
Tuancheng Feng	35287730	Acta Neuropathol Commun	WB

## Storage

**Storage:**  
Store at -20°C. Stable for one year after shipment.  
**Storage Buffer:**  
PBS with 0.02% sodium azide and 50% glycerol pH 7.3.  
Aliquoting is unnecessary for -20°C storage

For technical support and original validation data for this product please contact:

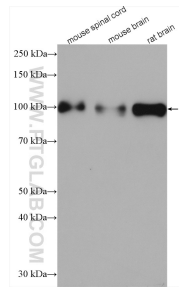
T: 4006900926

E: Proteintech-CN@ptglab.com

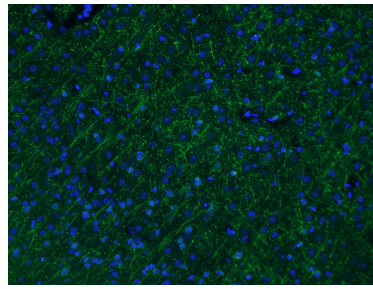
W: ptgcn.com

**This product is exclusively available under Proteintech Group brand and is not available to purchase from any other manufacturer.**

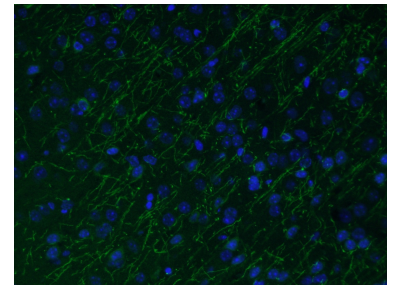
## Selected Validation Data



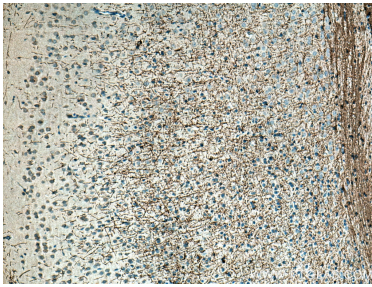
Various lysates were subjected to SDS PAGE followed by western blot with 14386-1-AP (MAG antibody) at dilution of 1:2500 incubated at room temperature for 1.5 hours.



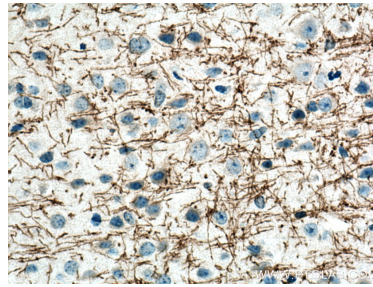
Immunofluorescent analysis of (4% PFA) fixed mouse brain tissue using 14386-1-AP (MAG antibody) at dilution of 1:50 and Alexa Fluor 488-Conjugated AffiniPure Goat Anti-Rabbit IgG(H+L).



Immunofluorescent analysis of (4% PFA) fixed mouse brain tissue using 14386-1-AP (MAG antibody) at dilution of 1:50 and Alexa Fluor 488-Conjugated AffiniPure Goat Anti-Rabbit IgG(H+L).



Immunohistochemical analysis of paraffin-embedded mouse brain tissue slide using 14386-1-AP (MAG antibody) at dilution of 1:200 (under 10x lens). Heat mediated antigen retrieval with Tris-EDTA buffer (pH 9.0).



Immunohistochemical analysis of paraffin-embedded mouse brain tissue slide using 14386-1-AP (MAG antibody) at dilution of 1:200 (under 40x lens). Heat mediated antigen retrieval with Tris-EDTA buffer (pH 9.0).