

For Research Use Only

Fascin Polyclonal antibody

Catalog Number: 14384-1-AP

Featured Product

11 Publications



Basic Information

Catalog Number:

14384-1-AP

Size:

400 µg/ml

Source:

Rabbit

Isotype:

IgG

Immunogen Catalog Number:

AG5816

GenBank Accession Number:

BC000521

GeneID (NCBI):

6624

ENSEMBL Gene ID:

ENSG00000075618

UNIPROT ID:

Q16658

Full Name:

fascin homolog 1, actin-bundling protein (Strongylocentrotus purpuratus)

Calculated MW:

55 kDa

Observed MW:

50-55 kDa

Purification Method:

Antigen affinity purification

Recommended Dilutions:

WB 1:2000-1:8000

IHC 1:50-1:500

IF-P 1:50-1:500

Applications

Tested Applications:

WB, IHC, IF-P, FC (Intra), ELISA

Cited Applications:

WB, IHC, IF

Species Specificity:

human, mouse

Cited Species:

human, mouse, rat

Note-IHC: suggested antigen retrieval with TE buffer pH 9.0; (*) Alternatively, antigen retrieval may be performed with citrate buffer pH 6.0

Positive Controls:

WB: HeLa cells, mouse thymus tissue, K-562 cells, NIH/3T3 cells, SH-SY5Y cells

IHC: human tonsillitis tissue, human liver cancer tissue

IF-P: mouse brain tissue,

Background Information

Fascin is a highly conserved and ubiquitous actin cross-linking protein that has a major function in cell motility and adhesion. Fascin localizes to a number of highly dynamic cellular structures that require strong mechanical support which include stress fibers and cellular protrusions such as microvilli, microspikes and lamellipodia. Fascin is up-regulated in many human carcinomas. It's a marker for Reed-Sternberg cells in Hodgkin's disease; it is also a highly selective marker for dendritic cells of lymphoid tissues.

Notable Publications

Author	Pubmed ID	Journal	Application
Lihua Guo	25433493	J Exp Clin Cancer Res	WB
Peiyu Gao	32554050	Immunol Lett	WB
Ajab Khan	31465800	Int J Biol Macromol	WB

Storage

Storage:

Store at -20°C. Stable for one year after shipment.

Storage Buffer:

PBS with 0.02% sodium azide and 50% glycerol pH 7.3.

Aliquoting is unnecessary for -20°C storage

For technical support and original validation data for this product please contact:

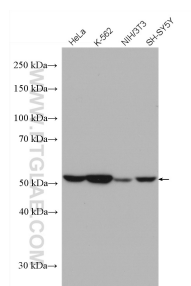
T: 4006900926

E: Proteintech-CN@ptglab.com

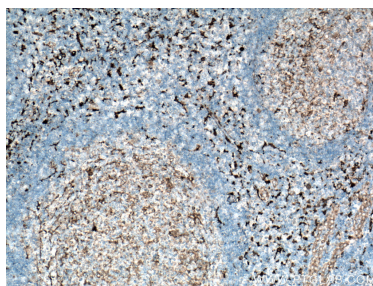
W: ptgcn.com

This product is exclusively available under Proteintech Group brand and is not available to purchase from any other manufacturer.

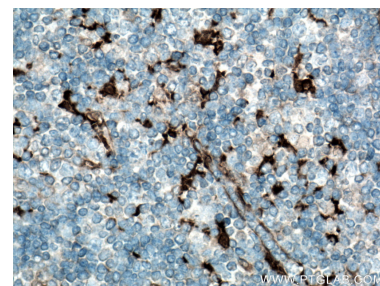
Selected Validation Data



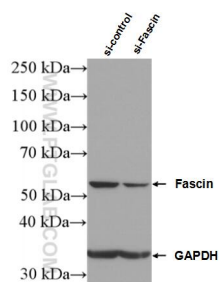
Various lysates were subjected to SDS PAGE followed by western blot with 14384-1-AP (Fascin antibody) at dilution of 1:8000 incubated at room temperature for 1.5 hours.



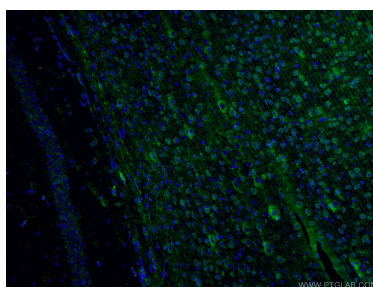
Immunohistochemical analysis of paraffin-embedded human tonsillitis tissue slide using 14384-1-AP (Fascin antibody) at dilution of 1:200 (under 10x lens. Heat mediated antigen retrieval with Tris-EDTA buffer (pH 9.0).



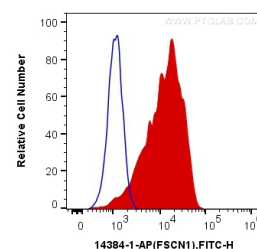
Immunohistochemical analysis of paraffin-embedded human tonsillitis tissue slide using 14384-1-AP (Fascin antibody) at dilution of 1:200 (under 40x lens. Heat mediated antigen retrieval with Tris-EDTA buffer (pH 9.0).



WB result of Fascin antibody (14384-1-AP; 1:20000; incubated at room temperature for 1.5 hours) with sh-Control and sh-Fascin transfected HeLa cells.



Immunofluorescent analysis of (4% PFA) fixed mouse brain tissue using 14384-1-AP (Fascin antibody) at dilution of 1:50 and Alexa Fluor 488-Conjugated Goat Anti-Rabbit IgG(H+L).



1X10⁶ SH-SY5Y cells were intracellularly stained with 0.2 ug Anti-Human Fascin (14384-1-AP) and CoraLite®488-Conjugated Goat Anti-Rabbit IgG(H+L) at dilution 1:1000 (red), or 0.2 ug Control Antibody. Cells were fixed with 4% PFA and permeabilized with 0.1% TritonX-100.