

For Research Use Only

# PSMA2 Polyclonal antibody

Catalog Number: 14377-1-AP

3 Publications



## Basic Information

Catalog Number:

14377-1-AP

Size:

350 µg/ml

Source:

Rabbit

Isotype:

IgG

Immunogen Catalog Number:

AG5753

GenBank Accession Number:

BC047697

GeneID (NCBI):

5683

UNIPROT ID:

P25787

Full Name:

proteasome (prosome, macropain)

subunit, alpha type, 2

Calculated MW:

26 kDa

Observed MW:

26 kDa

Purification Method:

Antigen affinity purification

Recommended Dilutions:

WB 1:500-1:1000

IHC 1:50-1:500

IF/ICC 1:20-1:200

## Applications

Tested Applications:

WB, IHC, IF/ICC, ELISA

Cited Applications:

WB, IHC

Species Specificity:

human, mouse, rat

Cited Species:

human

**Note-IHC: suggested antigen retrieval with TE buffer pH 9.0; (\*) Alternatively, antigen retrieval may be performed with citrate buffer pH 6.0**

Positive Controls:

WB: NIH/3T3 cells, HEK-293 cells, HepG2 cells, mouse kidney tissue, PC-3 cells

IHC: human skeletal muscle tissue,

IF/ICC: HepG2 cells,

## Background Information

PSMA2 (Proteasome subunit alpha type-2) is the essential subunit that contributes to the complete assembly of 20S proteasome complex, involved in the proteolytic degradation of most intracellular proteins. It is required in spermatogenesis and generation of a subset of MHC class I-presented antigenic peptides (PMID: 34711951, PMID: 27342858). Dysregulation of PSMA2 degradation leads to tumorigenesis including cervical cancer (PMID: 33684886).

## Notable Publications

Author	Pubmed ID	Journal	Application
Pengyuan Wang	39145797	J Gastroenterol	WB
Guangwei Wang	38481252	J Ovarian Res	IHC
Baofu Ma	36632878	Acta Biomater	WB

## Storage

Storage:

Store at -20°C. Stable for one year after shipment.

Storage Buffer:

PBS with 0.02% sodium azide and 50% glycerol pH 7.3.

Aliquoting is unnecessary for -20°C storage

For technical support and original validation data for this product please contact:

T: 4006900926

E: [Proteintech-CN@ptglab.com](mailto:Proteintech-CN@ptglab.com)

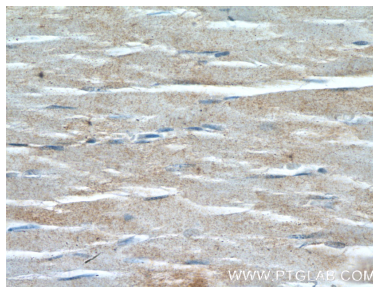
W: [ptgcn.com](http://ptgcn.com)

**This product is exclusively available under Proteintech Group brand and is not available to purchase from any other manufacturer.**

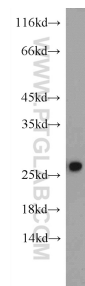
## Selected Validation Data



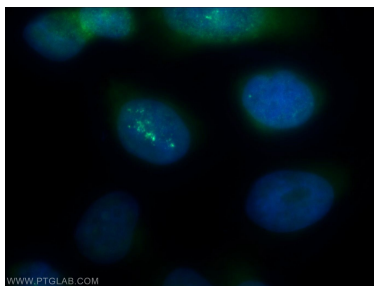
Immunohistochemical analysis of paraffin-embedded human skeletal muscle tissue slide using 14377-1-AP (PSMA2 antibody) at dilution of 1:200 (under 10x lens).



Immunohistochemical analysis of paraffin-embedded human skeletal muscle tissue slide using 14377-1-AP (PSMA2 antibody) at dilution of 1:200 (under 40x lens).



NIH/3T3 cells were subjected to SDS PAGE followed by western blot with 14377-1-AP (PSMA2 Antibody) at dilution of 1:600 incubated at room temperature for 1.5 hours.



Immunofluorescent analysis of HepG2 cells using 14377-1-AP (PSMA2 antibody) at dilution of 1:50 and Alexa Fluor 488-conjugated Goat Anti-Rabbit IgG(H+L).