

For Research Use Only

# MTMR2 Polyclonal antibody

Catalog Number: 14372-1-AP

Featured Product



## Basic Information

**Catalog Number:**

14372-1-AP

**Size:**

400 µg/ml

**Source:**

Rabbit

**Isotype:**

IgG

**Immunogen Catalog Number:**

AG5745

**GenBank Accession Number:**

BC052990

**GeneID (NCBI):**

8898

**UNIPROT ID:**

Q13614

**Full Name:**

myotubularin related protein 2

**Calculated MW:**

73 kDa

**Observed MW:**

66-73 kDa

**Purification Method:**

Antigen affinity purification

**Recommended Dilutions:**

WB 1:500-1:2000

IP 0.5-4.0 µg for 1.0-3.0 mg of total protein lysate

IHC 1:100-1:400

## Applications

**Tested Applications:**

IHC, IP, WB, ELISA

**Species Specificity:**

human, mouse, rat

**Note-IHC: suggested antigen retrieval with TE buffer pH 9.0; (\*) Alternatively, antigen retrieval may be performed with citrate buffer pH 6.0**

**Positive Controls:**

**WB:** HeLa cells, human cerebellum tissue, NIH/3T3 cells

**IP:** mouse cerebellum tissue,

**IHC:** human endometrial cancer tissue, human cerebellum tissue

## Background Information

MTMR2(myotubularin-related protein 2) is also named as KIAA1073 and belongs to the non-receptor class myotubularin subfamily, which is characterized by the presence of a phosphatase domain. It may regulate vesicular trafficking in Schwann cells (PMID:17880751) and its reversible phosphorylation represents a critical mechanism for regulating the subcellular localization of MTMR2(PMID:21372139). MTMR2 is a 73 kDa protein in its monomeric form and exist as a dimer within cells and the protein re-localizes to membranes in hypo-osmotic settings(PMID:16399794). Defects in MTMR2 are the cause of Charcot-Marie-Tooth disease type 4B1 (CMT4B1). MTMR2 has two isoforms with the molecular mass of 73 and 66 kDa.

## Storage

**Storage:**

Store at -20°C. Stable for one year after shipment.

**Storage Buffer:**

PBS with 0.02% sodium azide and 50% glycerol pH 7.3.

Aliquoting is unnecessary for -20°C storage

For technical support and original validation data for this product please contact:

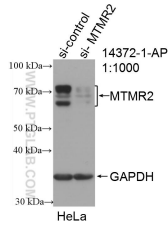
T: 4006900926

E: Proteintech-CN@ptglab.com

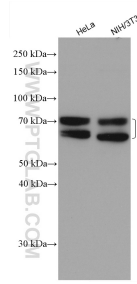
W: ptgcn.com

**This product is exclusively available under Proteintech Group brand and is not available to purchase from any other manufacturer.**

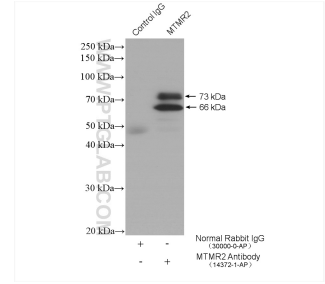
## Selected Validation Data



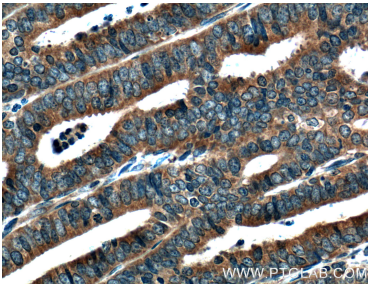
WB result of MTMR2 antibody (14372-1-AP; 1:1000; incubated at room temperature for 1.5 hours) with sh-Control and sh-MTMR2 transfected HeLa cells.



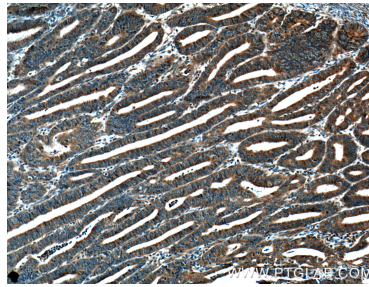
Various lysates were subjected to SDS PAGE followed by western blot with 14372-1-AP (MTMR2 antibody) at dilution of 1:1000 incubated at room temperature for 1.5 hours.



IP result of anti-MTMR2 (IP:14372-1-AP, 4ug; Detection:14372-1-AP 1:300) with mouse cerebellum tissue lysate 4000 ug.



Immunohistochemical analysis of paraffin-embedded human endometrial cancer tissue slide using 14372-1-AP (MTMR2 Antibody) at dilution of 1:200 (under 40x lens). Heat mediated antigen retrieval with Tris-EDTA buffer (pH 9.0).



Immunohistochemical analysis of paraffin-embedded human endometrial cancer tissue slide using 14372-1-AP (MTMR2 Antibody) at dilution of 1:200 (under 10x lens). Heat mediated antigen retrieval with Tris-EDTA buffer (pH 9.0).