

RBM3 Polyclonal antibody

Catalog Number: 14363-1-AP

Featured Product

39 Publications

Basic Information

Catalog Number:

14363-1-AP

Size:

500 ug/ml

Source:

Rabbit

Isotype:

IgG

Immunogen Catalog Number:

AG5934

GenBank Accession Number:

BC006825

GeneID (NCBI):

5935

UNIPROT ID:

P98179

Full Name:

RNA binding motif (RNP1, RRM)
protein 3

Calculated MW:

17 kDa

Observed MW:

17-20 kDa

Purification Method:

Antigen affinity purification

Recommended Dilutions:

WB 1:5000-1:50000

IHC 1:50-1:500

IF/ICC 1:50-1:500

Applications

Tested Applications:

WB, IHC, IF/ICC, ELISA

Cited Applications:

WB, IHC, IF, IP, RIP

Species Specificity:

human, mouse

Cited Species:

human, mouse, squirrel

Note-IHC: suggested antigen retrieval with TE buffer pH 9.0; (*) Alternatively, antigen retrieval may be performed with citrate buffer pH 6.0

Positive Controls:

WB : HeLa cells, MCF-7 cells, A375 cells, Raji cells, HepG2 cells, Jurkat cells, NIH/3T3 cells

IHC : human testis tissue, human lung tissue, human brain tissue, human kidney tissue, human spleen tissue

IF/ICC : HeLa cells,

Background Information

RBM3, also named as RNPL, is a cold-inducible mRNA binding protein that enhances global protein synthesis at both physiological and mild hypothermic temperatures. It reduces the relative abundance of microRNAs, when overexpressed. RBM3 enhances phosphorylation of translation initiation factors and active polysome formation. It is up-regulated in human tumors. RBM3 is a potential proto-oncogenic proteins upon overexpression. (PMID: 19900510).

Notable Publications

Author	Pubmed ID	Journal	Application
Travis C Jackson	31566073	J Cereb Blood Flow Metab	WB,IHC
Xiaobing Miao	32976820	Exp Mol Pathol	WB,IHC
Wenwen Si	32982696	Front Cell Neurosci	WB

Storage

Storage:

Store at -20°C. Stable for one year after shipment.

Storage Buffer:

PBS with 0.02% sodium azide and 50% glycerol pH 7.3.

Aliquoting is unnecessary for -20°C storage

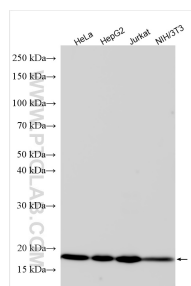
For technical support and original validation data for this product please contact:

T: 4006900926

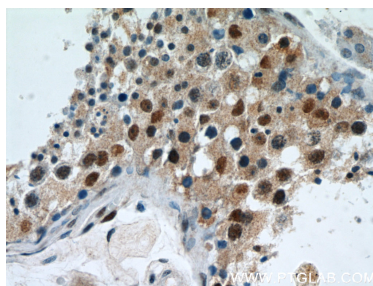
E: Proteintech-CN@ptglab.comW: ptgcn.com

This product is exclusively available under Proteintech Group brand and is not available to purchase from any other manufacturer.

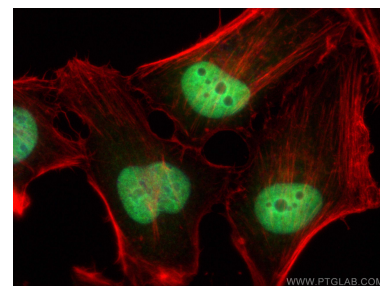
Selected Validation Data



Various lysates were subjected to SDS PAGE followed by western blot with 14363-1-AP (RBM3 antibody) at dilution of 1:10000 incubated at room temperature for 1.5 hours.



Immunohistochemical analysis of paraffin-embedded human testis using 14363-1-AP (RBM3 antibody) at dilution of 1:50 (under 40x lens).



Immunofluorescent analysis of (4% PFA) fixed HeLa cells using RBM3 antibody (14363-1-AP) at dilution of 1:200 and CoraLite®488-Conjugated AffiniPure Goat Anti-Rabbit IgG(H+L) (SA00013-2), CL594-phalloidin (red).