

For Research Use Only

ERG Polyclonal antibody

Catalog Number: 14356-1-AP

Featured Product

7 Publications



Basic Information

Catalog Number:

14356-1-AP

Concentration:

400 ug/ml

Source:

Rabbit

Isotype:

IgG

Immunogen Catalog Number:

AG5708

GenBank Accession Number:

BC040168

GeneID (NCBI):

2078

UNIPROT ID:

P11308

Full Name:

v-ets erythroblastosis virus E26
oncogene homolog (avian)

Calculated MW:

55 kDa

Observed MW:

55 kDa

Purification Method:

Antigen affinity purification

Recommended Dilutions:

WB: 1:500-1:1000

IP: 0.5-4.0 ug for 1.0-3.0 mg of total
protein lysate

IHC: 1:600-1:2400

Applications

Tested Applications:

WB, IHC, IP, ELISA

Cited Applications:

WB, IHC, IF

Species Specificity:

human, mouse, rat

Cited Species:

human, mouse

**Note-IHC: suggested antigen retrieval with
TE buffer pH 9.0; (*) Alternatively, antigen
retrieval may be performed with citrate
buffer pH 6.0**

Positive Controls:

WB : MCF-7 cells,

IP : MCF-7 cells,

IHC : human prostate cancer tissue, mouse brain tissue,
human tonsillitis tissue

Background Information

ERG (ETS-related gene) is a member of the ETS family of transcription factors, which are downstream effectors of mitogenic signaling transduction pathway. ERG is a key regulator of cell proliferation, differentiation, angiogenesis, inflammation, and apoptosis. ERG is involved in chromosomal translocations, resulting in different fusion gene products, such as TMPSSR2-ERG and NDRG1-ERG in prostate cancer, EWS-ERG in Ewing's sarcoma and FUS-ERG in acute myeloid leukemia.

Notable Publications

Author	Pubmed ID	Journal	Application
Qiong Wang	36088396	Cell Biosci	WB
Yongbao Wei	32489464	J Cancer	WB
Feng Yao	35279683	Cell Death Discov	WB,IF

Storage

Storage:

Store at -20°C. Stable for one year after shipment.

Storage Buffer:

PBS with 0.02% sodium azide and 50% glycerol, pH7.3

Aliquoting is unnecessary for -20°C storage

For technical support and original validation data for this product please contact:

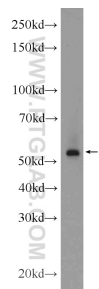
T: 4006900926

E: Proteintech-CN@ptglab.com

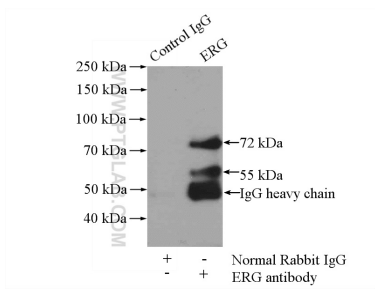
W: ptgcn.com

This product is exclusively available under Proteintech Group brand and is not available to purchase from any other manufacturer.

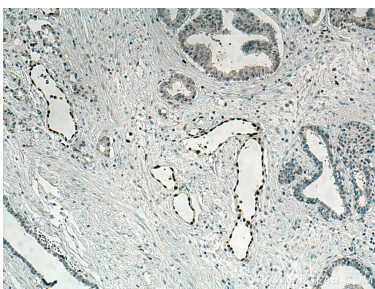
Selected Validation Data



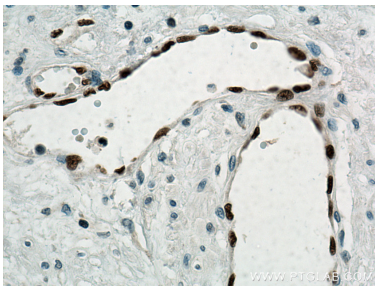
MCF-7 cells were subjected to SDS PAGE followed by western blot with 14356-1-AP (ERG Antibody) at dilution of 1:600 incubated at room temperature for 1.5 hours.



IP result of anti-ERG (IP:14356-1-AP, 4ug; Detection:14356-1-AP 1:500) with MCF-7 cells lysate 800ug.



Immunohistochemical analysis of paraffin-embedded human prostate cancer tissue slide using 14356-1-AP (ERG antibody) at dilution of 1:1200 (under 10x lens). Heat mediated antigen retrieval with Tris-EDTA buffer (pH 9.0).



Immunohistochemical analysis of paraffin-embedded human prostate cancer tissue slide using 14356-1-AP (ERG antibody) at dilution of 1:1200 (under 40x lens). Heat mediated antigen retrieval with Tris-EDTA buffer (pH 9.0).