

For Research Use Only

RBP3 Polyclonal antibody

Catalog Number: 14352-1-AP

6 Publications



Basic Information

Catalog Number:

14352-1-AP

Size:

400 µg/ml

Source:

Rabbit

Isotype:

IgG

Immunogen Catalog Number:

AG5699

GenBank Accession Number:

BC039844

GeneID (NCBI):

5949

UNIPROT ID:

P10745

Full Name:

retinol binding protein 3, interstitial

Calculated MW:

135 kDa

Observed MW:

140 kDa

Purification Method:

Antigen affinity purification

Recommended Dilutions:

WB 1:1000-1:4000

IP 0.5-4.0 µg for 1.0-3.0 mg of total protein lysate

IHC 1:20-1:200

Applications

Tested Applications:

WB, IP, IHC, ELISA

Cited Applications:

WB, IHC, IF, IP

Species Specificity:

human, mouse, rat

Cited Species:

human, mouse

Note-IHC: suggested antigen retrieval with TE buffer pH 9.0; (*) Alternatively, antigen retrieval may be performed with citrate buffer pH 6.0

Positive Controls:

WB : mouse eye tissue, Y79 cells

IP : Y79 cells,

IHC : human eye tissue,

Background Information

RBP3 (retinoid-binding protein 3), also called interstitial retinoid-binding protein (IRBP), is a large glycoprotein that is synthesized and secreted by rod photoreceptor cells into the interphotoreceptor matrix. It is known to bind retinoids and fatty acids. RBP3 migrates around 136-140 kDa in the western blot analysis. (PMID: 15928609)

Notable Publications

Author	Pubmed ID	Journal	Application
Taylor N LaFlam	26527800	J Exp Med	IP
Majed Felemban	29777959	Acta Biomater	IHC
Suguru Yamasaki	35024589	iScience	IF

Storage

Storage:

Store at -20°C. Stable for one year after shipment.

Storage Buffer:

PBS with 0.02% sodium azide and 50% glycerol pH 7.3.

Aliquoting is unnecessary for -20°C storage

For technical support and original validation data for this product please contact:

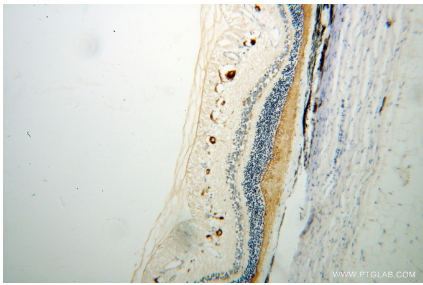
T: 4006900926

E: Proteintech-CN@ptglab.com

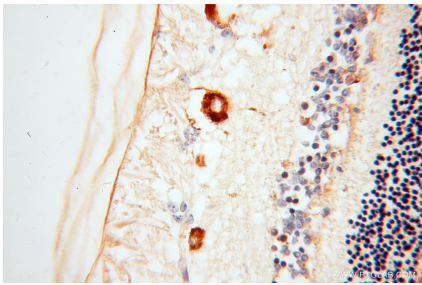
W: ptgcn.com

This product is exclusively available under Proteintech Group brand and is not available to purchase from any other manufacturer.

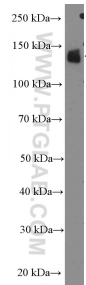
Selected Validation Data



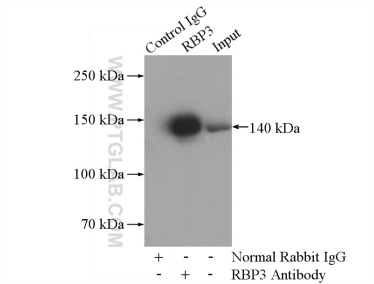
Immunohistochemical analysis of paraffin-embedded human eye using 14352-1-AP (RBP3 antibody) at dilution of 1:50 (under 10x lens).



Immunohistochemical analysis of paraffin-embedded human eye using 14352-1-AP (RBP3 antibody) at dilution of 1:50 (under 40x lens).



mouse eye tissue were subjected to SDS PAGE followed by western blot with 14352-1-AP (RBP3 Antibody) at dilution of 1:2000 incubated at room temperature for 1.5 hours.



IP result of anti-RBP3 (IP:14352-1-AP, 4ug; Detection:14352-1-AP 1:400) with Y79 cells lysate 2000ug.