

For Research Use Only

CRCP Polyclonal antibody

Catalog Number: 14348-1-AP

6 Publications



Basic Information

Catalog Number:

14348-1-AP

Size:

473 µg/ml

Source:

Rabbit

Isotype:

IgG

Immunogen Catalog Number:

AG5689

GenBank Accession Number:

BC040107

GeneID (NCBI):

27297

UNIPROT ID:

O75575

Full Name:

CGRP receptor component

Calculated MW:

17 kDa

Observed MW:

20 kDa

Purification Method:

Antigen affinity purification

Recommended Dilutions:

WB 1:1000-1:4000

IP 0.5-4.0 µg for 1.0-3.0 mg of total protein lysate

IHC 1:20-1:200

Applications

Tested Applications:

WB, IP, IHC, ELISA

Cited Applications:

WB, IF

Species Specificity:

human, mouse, rat

Cited Species:

human, mouse, rat

Note-IHC: suggested antigen retrieval with TE buffer pH 9.0; (*) Alternatively, antigen retrieval may be performed with citrate buffer pH 6.0

Positive Controls:

WB: Raji cells, HeLa cells, human testis tissue, MCF-7 cells

IP: Raji cells,

IHC: human testis tissue,

Background Information

Notable Publications

Author	Pubmed ID	Journal	Application
Qi An	34020664	J Neuroinflammation	IF
Rui Shi	35317822	J Transl Med	WB
Tingjiao Liu	34296452	Cell Biochem Funct	IF

Storage

Storage:

Store at -20°C. Stable for one year after shipment.

Storage Buffer:

PBS with 0.02% sodium azide and 50% glycerol pH 7.3.

Aliquoting is unnecessary for -20°C storage

For technical support and original validation data for this product please contact:

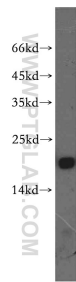
T: 4006900926

E: Proteintech-CN@ptglab.com

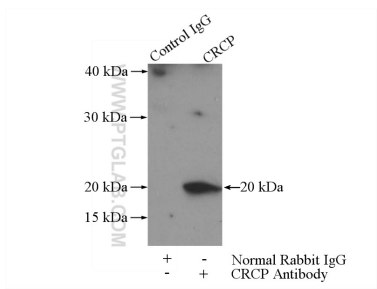
W: ptgcn.com

This product is exclusively available under Proteintech Group brand and is not available to purchase from any other manufacturer.

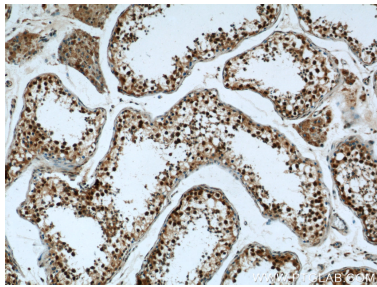
Selected Validation Data



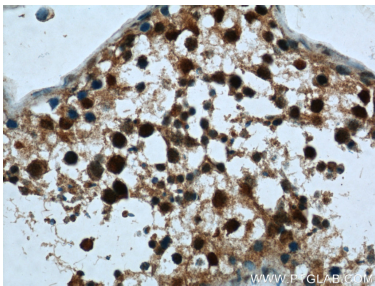
Raji cells were subjected to SDS PAGE followed by western blot with 14348-1-AP (CRCP antibody) at dilution of 1:1000 incubated at room temperature for 1.5 hours.



IP result of anti-CRCP (IP:14348-1-AP, 3ug; Detection:14348-1-AP 1:1000) with Raji cells lysate 2800ug.



Immunohistochemical analysis of paraffin-embedded human testis tissue slide using 14348-1-AP (CRCP Antibody) at dilution of 1:50 (under 10x lens).



Immunohistochemical analysis of paraffin-embedded human testis tissue slide using 14348-1-AP (CRCP Antibody) at dilution of 1:50 (under 40x lens).