

For Research Use Only

# KIF4A Polyclonal antibody, PBS Only

Catalog Number: 14344-1-PBS



## Basic Information

Catalog Number:

14344-1-PBS

Concentration:

1 mg/ml

Source:

Rabbit

Isotype:

IgG

Immunogen Catalog Number:

AG5682

GenBank Accession Number:

BC050548

GeneID (NCBI):

24137

UNIPROT ID:

O95239

Full Name:

kinesin family member 4A

Calculated MW:

140 kDa

Purification Method:

Antigen affinity purification

## Applications

Tested Applications:

IHC, IF/ICC, Indirect ELISA

Species Specificity:

human, mouse, rat

## Background Information

### Storage

Storage:

Store at -80°C.

The product is shipped with ice packs. Upon receipt, store it immediately at -80°C

Storage Buffer:

PBS Only

For technical support and original validation data for this product please contact:

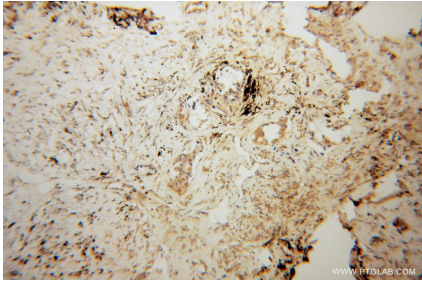
T: 4006900926

E: [Proteintech-CN@ptglab.com](mailto:Proteintech-CN@ptglab.com)

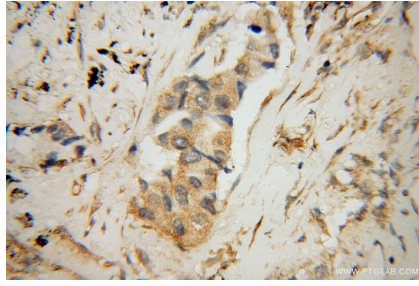
W: [ptgcn.com](http://ptgcn.com)

This product is exclusively available under Proteintech Group brand and is not available to purchase from any other manufacturer.

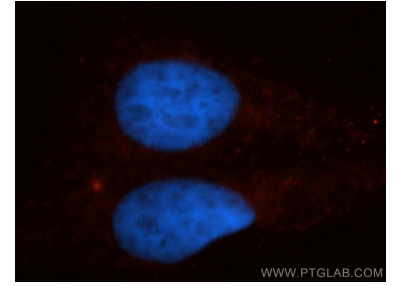
## Selected Validation Data



Immunohistochemical analysis of paraffin-embedded human lung cancer using 14344-1-AP (KIF4A antibody) at dilution of 1:50 (under 10x lens). This data was developed using the same antibody clone with 14344-1-PBS in a different storage buffer formulation.



Immunohistochemical analysis of paraffin-embedded human lung cancer using 14344-1-AP (KIF4A antibody) at dilution of 1:50 (under 40x lens). This data was developed using the same antibody clone with 14344-1-PBS in a different storage buffer formulation.



Immunofluorescent analysis of HepG2 cells, using KIF4A antibody 14344-1-AP at 1:50 dilution and Rhodamine-labeled goat anti-rabbit IgG (red). Blue pseudocolor = DAPI (fluorescent DNA dye). This data was developed using the same antibody clone with 14344-1-PBS in a different storage buffer formulation.