

For Research Use Only

# KIF4A Polyclonal antibody

Catalog Number: 14344-1-AP

3 Publications



## Basic Information

Catalog Number:

14344-1-AP

Concentration:

267 ug/ml

Source:

Rabbit

Isotype:

IgG

Immunogen Catalog Number:

AG5682

GenBank Accession Number:

BC050548

GeneID (NCBI):

24137

UNIPROT ID:

O95239

Full Name:

kinesin family member 4A

Calculated MW:

140 kDa

Purification Method:

Antigen affinity purification

Recommended Dilutions:

IHC 1:20-1:200

IF/ICC 1:20-1:200

## Applications

Tested Applications:

IHC, IF/ICC, ELISA

Species Specificity:

human, mouse, rat

Positive Controls:

IHC : human lung cancer tissue,

IF/ICC : HepG2 cells,

**Note-IHC: suggested antigen retrieval with TE buffer pH 9.0; (\*) Alternatively, antigen retrieval may be performed with citrate buffer pH 6.0**

## Background Information

### Storage

Storage:

Store at -20°C. Stable for one year after shipment.

Storage Buffer:

PBS with 0.02% sodium azide and 50% glycerol pH 7.3.

Aliquoting is unnecessary for -20°C storage

For technical support and original validation data for this product please contact:

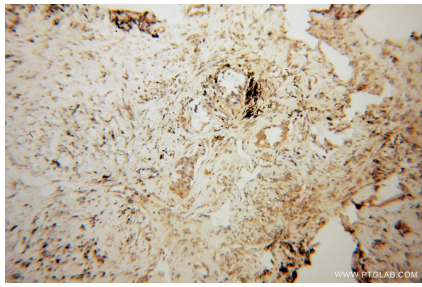
T: 4006900926

E: [Proteintech-CN@ptglab.com](mailto:Proteintech-CN@ptglab.com)

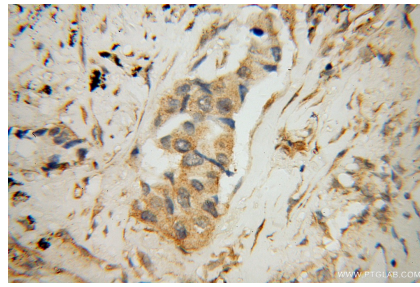
W: [ptgcn.com](http://ptgcn.com)

This product is exclusively available under Proteintech Group brand and is not available to purchase from any other manufacturer.

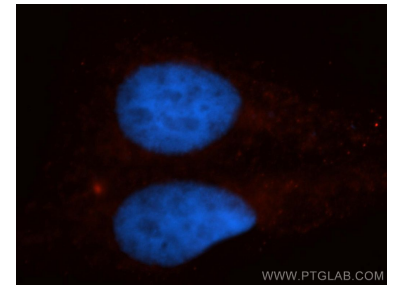
## Selected Validation Data



Immunohistochemical analysis of paraffin-embedded human lung cancer using 14344-1-AP (KIF4A antibody) at dilution of 1:50 (under 10x lens).



Immunohistochemical analysis of paraffin-embedded human lung cancer using 14344-1-AP (KIF4A antibody) at dilution of 1:50 (under 40x lens).



Immunofluorescent analysis of HepG2 cells, using KIF4A antibody 14344-1-AP at 1:50 dilution and Rhodamine-labeled goat anti-rabbit IgG (red). Blue pseudocolor = DAPI (fluorescent DNA dye).