

For Research Use Only

NUB1 Polyclonal antibody

Catalog Number: 14343-1-AP

Featured Product

3 Publications



Basic Information

Catalog Number:

14343-1-AP

Size:

380 µg/ml

Source:

Rabbit

Isotype:

IgG

Immunogen Catalog Number:

AG5668

GenBank Accession Number:

BC046354

GeneID (NCBI):

51667

UNIPROT ID:

Q9Y5A7

Full Name:

negative regulator of ubiquitin-like proteins 1

Calculated MW:

71 kDa

Observed MW:

69 kDa

Purification Method:

Antigen affinity purification

Recommended Dilutions:

WB 1:1000-1:6000

IP 0.5-4.0 µg for 1.0-3.0 mg of total protein lysate

IF/ICC 1:200-1:800

Applications

Tested Applications:

WB, IF/ICC, IP, ELISA

Cited Applications:

WB, IHC, IF

Species Specificity:

human, mouse, rat

Cited Species:

human, mouse

Positive Controls:

WB : HEK-293 cells, HeLa cells, Raji cells

IP : HEK-293 cells,

IF/ICC : HeLa cells,

Background Information

Proteasome-associated protein NEDD8 ultimate buster 1 (NUB1) is an interferon-inducible protein that down-regulates NEDD8 expression and its conjugation system. Over-expression of NUB1 induces a growth-inhibitory effect in cells, and it mediates anti-proliferative actions and apoptosis in renal cell carcinoma cells through cell-cycle regulation. Expression of NUB1 leads to decreased modification of p53 with NEDD8 and stimulation of p53 ubiquitination. Recent finding revealed that NUB1, by regulating GSK3 β levels, modulates tau phosphorylation and aggregation, and is a key player in neurodegeneration associated with tau pathology.

Notable Publications

Author	Pubmed ID	Journal	Application
Kunikazu Tanji	26797281	Biochem Biophys Res Commun	WB,IF
Fumiaki Mori	24812700	Neuropathology	IHC
Kunikazu Tanji	31006160	Brain Pathol	WB

Storage

Storage:

Store at -20°C. Stable for one year after shipment.

Storage Buffer:

PBS with 0.02% sodium azide and 50% glycerol pH 7.3.

Aliquoting is unnecessary for -20°C storage

For technical support and original validation data for this product please contact:

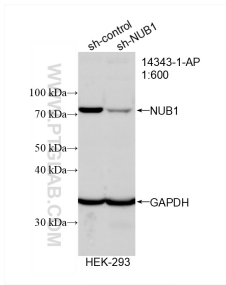
T: 4006900926

E: Proteintech-CN@ptglab.com

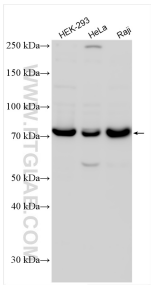
W: ptgcn.com

This product is exclusively available under Proteintech Group brand and is not available to purchase from any other manufacturer.

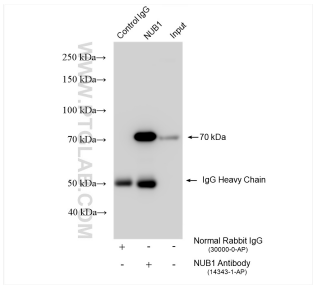
Selected Validation Data



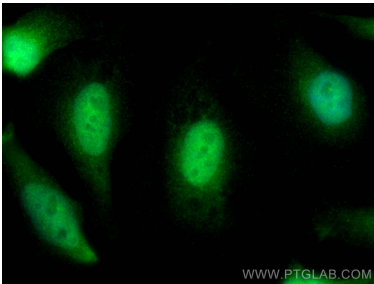
WB result of NUB1 antibody (14343-1-AP; 1:600; incubated at room temperature for 1.5 hours) with sh-Control and sh-NUB1 transfected HEK-293 cells.



Various lysates were subjected to SDS PAGE followed by western blot with 14343-1-AP (NUB1 antibody) at dilution of 1:3000 incubated at room temperature for 1.5 hours.



IP result of anti-NUB1 (IP:14343-1-AP, 4ug; Detection:14343-1-AP 1:600) with HEK-293 cells lysate 1575 ug.



Immunofluorescent analysis of (4% PFA) fixed HeLa cells using NUB1 antibody (14343-1-AP) at dilution of 1:400 and CoraLite®488-Conjugated AffiniPure Goat Anti-Rabbit IgG(H+L).