

For Research Use Only

# DIAPH3 Polyclonal antibody, PBS Only

Catalog Number: 14342-1-PBS

Featured Product



## Basic Information

**Catalog Number:**

14342-1-PBS

**Source:**

Rabbit

**Isotype:**

IgG

**Immunogen Catalog Number:**

AG5656

**GenBank Accession Number:**

BC048963

**GeneID (NCBI):**

81624

**UNIPROT ID:**

Q9NSV4

**Full Name:**

diaphanous homolog 3 (Drosophila)

**Calculated MW:**

137 kDa

**Observed MW:**

125-137 kDa

**Purification Method:**

Antigen affinity purification

## Applications

**Tested Applications:**

WB, IHC, IF/ICC, IP, Indirect ELISA

**Species Specificity:**

human, mouse, rat

## Background Information

DIAPH3 is also referred as diaphanous-related formin-3 which binds to GTP-bound form of Rho and to profilin, acts in a Rho-dependent manner to recruit profilin to the membrane. It is required for cytokinesis, stress fiber formation, and transcriptional activation of the serum response factor. Seven isoforms of DIAPH3 exist due to the alternative splicing. Recently it has been reported that dimerization and actin assembly activity of DIAPH3 isoforms 1 and 7 are essential for induction of specific cell protrusions. It may propose that isoform-selective actin assembly by DIAPH3 exerts specific and differentially regulated functions during cell adhesion and motility.

## Storage

**Storage:**

Store at -80°C.

**The product is shipped with ice packs. Upon receipt, store it immediately at -80°C**

**Storage Buffer:**

PBS only, pH7.3

For technical support and original validation data for this product please contact:

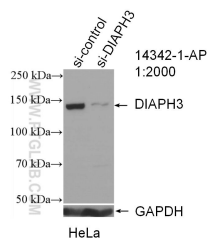
T: 4006900926

E: Proteintech-CN@ptglab.com

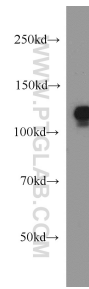
W: ptgcn.com

**This product is exclusively available under Proteintech Group brand and is not available to purchase from any other manufacturer.**

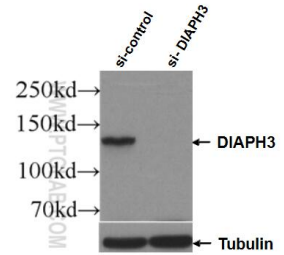
## Selected Validation Data



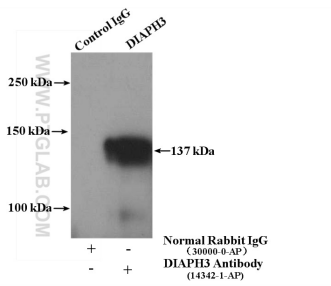
WB result of DIAPH3 antibody (14342-1-AP; 1:2000; incubated at room temperature for 1.5 hours) with sh-Control and sh-DIAPH3 transfected HeLa cells. This data was developed using the same antibody clone with 14342-1-PBS in a different storage buffer formulation.



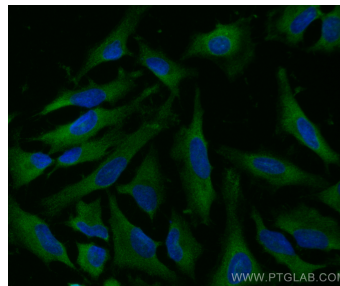
HeLa cells were subjected to SDS PAGE followed by western blot with 14342-1-AP (DIAPH3 antibody) at dilution of 1:1000 incubated at room temperature for 1.5 hours. This data was developed using the same antibody clone with 14342-1-PBS in a different storage buffer formulation.



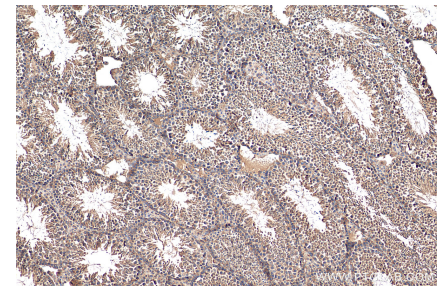
WB result of DIAPH3 antibody (14342-1-AP; 1:1000; incubated at room temperature for 1.5 hours) with sh-Control and sh-DIAPH3 transfected HEK-293 cells. This data was developed using the same antibody clone with 14342-1-PBS in a different storage buffer formulation.



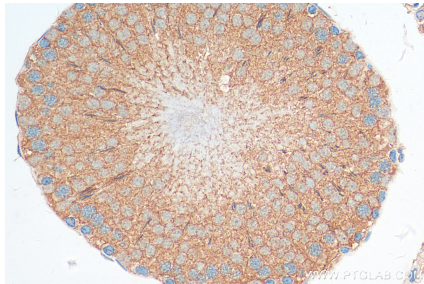
IP result of anti-DIAPH3 (IP:14342-1-AP, 4 $\mu$ g; Detection:14342-1-AP 1:500) with HeLa cells lysate 2000 $\mu$ g. This data was developed using the same antibody clone with 14342-1-PBS in a different storage buffer formulation.



Immunofluorescent analysis of (-20°C Ethanol) fixed HeLa cells using DIAPH3 antibody (14342-1-AP) at dilution of 1:400 and CoraLite@488-Conjugated AffiniPure Goat Anti-Rabbit IgG(H+L). This data was developed using the same antibody clone with 14342-1-PBS in a different storage buffer formulation.



Immunohistochemical analysis of paraffin-embedded mouse testis tissue slide using 14342-1-AP (DIAPH3 antibody) at dilution of 1:200 (under 10x lens). Heat mediated antigen retrieval with Tris-EDTA buffer (pH 9.0). This data was developed using the same antibody clone with 14342-1-PBS in a different storage buffer formulation.



Immunohistochemical analysis of paraffin-embedded rat testis tissue slide using 14342-1-AP (DIAPH3 antibody) at dilution of 1:200 (under 40x lens). Heat mediated antigen retrieval with Tris-EDTA buffer (pH 9.0). This data was developed using the same antibody clone with 14342-1-PBS in a different storage buffer formulation.