

For Research Use Only

PALB2 Polyclonal antibody

Catalog Number: 14340-1-AP

4 Publications



Basic Information

Catalog Number:

14340-1-AP

Concentration:

300 ug/ml

Source:

Rabbit

Isotype:

IgG

Immunogen Catalog Number:

AG5654

GenBank Accession Number:

BC044254

GeneID (NCBI):

79728

UNIPROT ID:

Q86YC2

Full Name:

partner and localizer of BRCA2

Calculated MW:

131 kDa

Observed MW:

130 kDa; 80-90 kDa; 250-260 kDa

Purification Method:

Antigen affinity purification

Recommended Dilutions:

WB 1:2000-1:12000

IHC 1:50-1:500

Applications

Tested Applications:

WB, IHC, ELISA

Cited Applications:

WB

Species Specificity:

human, mouse, rat

Cited Species:

human, mouse

Note-IHC: suggested antigen retrieval with TE buffer pH 9.0; (*) Alternatively, antigen retrieval may be performed with citrate buffer pH 6.0

Positive Controls:

WB : HeLa cells, K-562 cells, THP-1 cells

IHC : human breast cancer tissue,

Background Information

PALB2 can interact with BRCA1 and BRCA2 and form the BRCA1-PALB2-BRCA2 complex which is critical for homologous recombination and DNA damage response. PALB2 is an essential partner of BRCA2 that promotes the localization and stability of BRCA2. The predicted MW of PALB2 is approximately 130 kDa, while the truncated PALB2 protein around 80-90 kDa can also be detected in SDS-PAGE similar to papers. (PubMed:16793542, 24141787, 24153426). There's the dimer form with MW 250-260 kDa (refer to PMID: 30289697).

Notable Publications

Author	Pubmed ID	Journal	Application
Zhihao Wang	33459381	EMBO J	WB
Gozde Inci	36500714	Molecules	WB
Huan Li	39892701	Cancer Lett	WB

Storage

Storage:

Store at -20°C. Stable for one year after shipment.

Storage Buffer:

PBS with 0.02% sodium azide and 50% glycerol pH 7.3.

Aliquoting is unnecessary for -20°C storage

For technical support and original validation data for this product please contact:

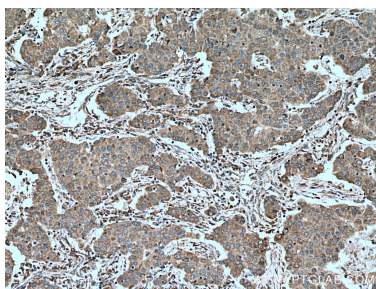
T: 4006900926

E: Proteintech-CN@ptglab.com

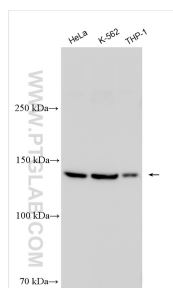
W: ptgcn.com

This product is exclusively available under Proteintech Group brand and is not available to purchase from any other manufacturer.

Selected Validation Data



Immunohistochemical analysis of paraffin-embedded human breast cancer tissue slide using 14340-1-AP (PALB2 antibody) at dilution of 1:200 (under 10x lens). Heat mediated antigen retrieval with Tris-EDTA buffer (pH 9.0).



Various lysates were subjected to SDS PAGE followed by western blot with 14340-1-AP (PALB2 antibody) at dilution of 1:6000 incubated at room temperature for 1.5 hours.