

For Research Use Only

# CADM1 Polyclonal antibody

Catalog Number: 14335-1-AP

6 Publications



## Basic Information

### Catalog Number:

14335-1-AP

### Size:

280 ug/ml

### Source:

Rabbit

### Isotype:

IgG

### Immunogen Catalog Number:

AG5621

### GenBank Accession Number:

BC047021

### GeneID (NCBI):

23705

### UNIPROT ID:

Q9BY67

### Full Name:

cell adhesion molecule 1

### Calculated MW:

49 kDa

### Observed MW:

49-60 kDa

### Purification Method:

Antigen affinity purification

### Recommended Dilutions:

WB 1:500-1:1000

IHC 1:50-1:500

## Applications

### Tested Applications:

WB, IHC, ELISA

### Cited Applications:

WB

### Species Specificity:

human, mouse, rat

### Cited Species:

human, mouse

**Note-IHC: suggested antigen retrieval with TE buffer pH 9.0; (\*) Alternatively, antigen retrieval may be performed with citrate buffer pH 6.0**

### Positive Controls:

**WB** : mouse liver tissue, A549 cells, human placenta tissue, mouse lung tissue

**IHC** : human intrahepatic cholangiocarcinoma tissue,

## Background Information

CADM1 (cell adhesion molecule 1), also referred to as SgIGSF, Necl-2 or TSLC-1, is a cell adhesion molecule belonging to the immunoglobulin superfamily. It can mediate homophilic and heterophilic cell-cell adhesion. CADM1 is expressed by a variety of cells including neurons, mast cells, spermatogonia, pancreatic islet cells, epithelial cells such as lung alveolar cells and biliary epithelial cells. CADM1 is involved in carcinoma pathogenesis and the expression of CADM1 is frequently down-regulated in various tumors derived from epithelial cells. It acts as a tumor suppressor in non-small-cell lung cancer (NSCLC) cells. (PMID: 18332875; 17326163; 20340131)

## Notable Publications

Author	Pubmed ID	Journal	Application
Yujun Li	31819525	Onco Targets Ther	WB
Zhu Ying Y	23700466	PLoS One	WB
Haiqing Cai	30013657	Oncol Lett	WB

## Storage

### Storage:

Store at -20°C. Stable for one year after shipment.

### Storage Buffer:

PBS with 0.02% sodium azide and 50% glycerol pH 7.3.

Aliquoting is unnecessary for -20°C storage

For technical support and original validation data for this product please contact:

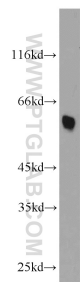
T: 4006900926

E: [Proteintech-CN@ptglab.com](mailto:Proteintech-CN@ptglab.com)

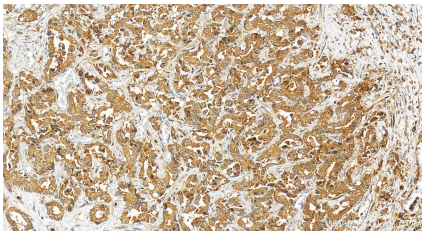
W: [ptgcn.com](http://ptgcn.com)

**This product is exclusively available under Proteintech Group brand and is not available to purchase from any other manufacturer.**

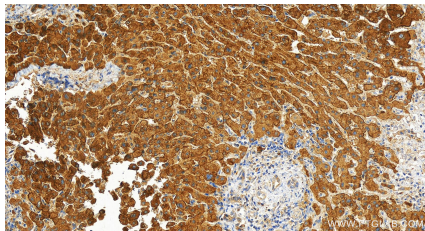
Selected Validation Data



mouse liver tissue were subjected to SDS PAGE followed by western blot with 14335-1-AP (CADM1 antibody) at dilution of 1:1000 incubated at room temperature for 1.5 hours.



Immunohistochemical analysis of paraffin-embedded human intrahepatic cholangiocarcinoma tissue slide using 14335-1-AP (CADM1 antibody) at dilution of 1:200 (under 20x lens). Heat mediated antigen retrieval with Tris-EDTA buffer (pH 9.0).



Immunohistochemical analysis of paraffin-embedded human intrahepatic cholangiocarcinoma tissue slide using 14335-1-AP (CADM1 antibody) at dilution of 1:200 (under 20x lens). Heat mediated antigen retrieval with Tris-EDTA buffer (pH 9.0).