

For Research Use Only

# KIF3C Polyclonal antibody

Catalog Number: 14333-1-AP

5 Publications



## Basic Information

### Catalog Number:

14333-1-AP

### Size:

350 µg/ml

### Source:

Rabbit

### Isotype:

IgG

### Immunogen Catalog Number:

AG5619

### GenBank Accession Number:

BC042486

### GeneID (NCBI):

3797

### UNIPROT ID:

O14782

### Full Name:

kinesin family member 3C

### Calculated MW:

89 kDa

### Observed MW:

100 kDa

### Purification Method:

Antigen affinity purification

### Recommended Dilutions:

WB 1:500-1:3000

IP 0.5-4.0 µg for 1.0-3.0 mg of total protein lysate

IHC 1:50-1:500

IF/ICC 1:50-1:500

## Applications

### Tested Applications:

WB, IHC, IF/ICC, IP, ELISA

### Cited Applications:

WB, IHC

### Species Specificity:

human, mouse, rat

### Cited Species:

human, mouse

**Note-IHC: suggested antigen retrieval with TE buffer pH 9.0; (\*) Alternatively, antigen retrieval may be performed with citrate buffer pH 6.0**

### Positive Controls:

WB : Y79 cells, HeLa cells, mouse brain tissue

IP : mouse brain tissue,

IHC : human gliomas tissue,

IF/ICC : SH-SY5Y cells,

## Background Information

### Notable Publications

Author	Pubmed ID	Journal	Application
Honggui Ma	34537760	Aging (Albany NY)	IHC
Yang Gao	33150178	Biomed Res Int	WB
Jasbir Singh Dalal	34259631	Elife	WB

## Storage

### Storage:

Store at -20°C. Stable for one year after shipment.

### Storage Buffer:

PBS with 0.02% sodium azide and 50% glycerol pH 7.3.

Aliquoting is unnecessary for -20°C storage

For technical support and original validation data for this product please contact:

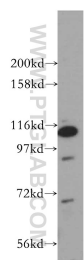
T: 4006900926

E: [Proteintech-CN@ptglab.com](mailto:Proteintech-CN@ptglab.com)

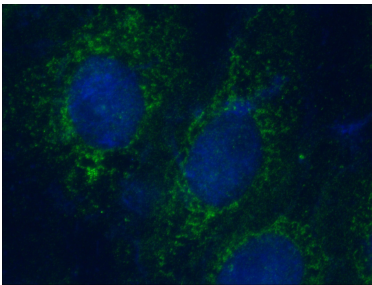
W: [ptgcn.com](http://ptgcn.com)

This product is exclusively available under Proteintech Group brand and is not available to purchase from any other manufacturer.

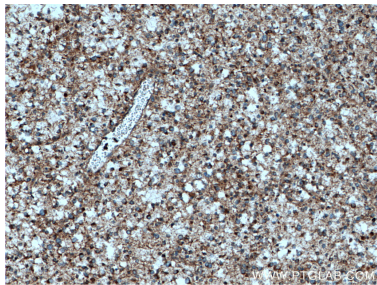
Selected Validation Data



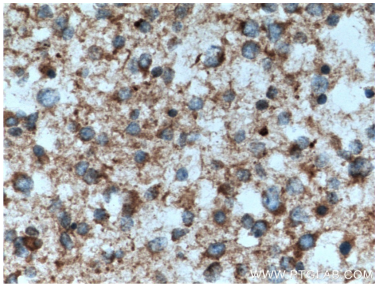
Y79 cells were subjected to SDS PAGE followed by western blot with 14333-1-AP (KIF3C antibody) at dilution of 1:800 incubated at room temperature for 1.5 hours.



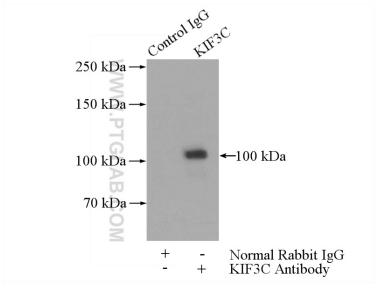
Immunofluorescent analysis of (4% PFA) fixed SH-SY5Y cells using 14333-1-AP (KIF3C antibody) at dilution of 1:100 and CoraLite488-Conjugated Goat Anti-Rabbit IgG(H+L).



Immunohistochemical analysis of paraffin-embedded human gliomas tissue slide using 14333-1-AP (KIF3C antibody) at dilution of 1:200 (under 10x lens. Heat mediated antigen retrieval with Tris-EDTA buffer (pH 9.0).



Immunohistochemical analysis of paraffin-embedded human gliomas tissue slide using 14333-1-AP (KIF3C antibody) at dilution of 1:200 (under 40x lens. Heat mediated antigen retrieval with Tris-EDTA buffer (pH 9.0).



IP result of anti-KIF3C (IP:14333-1-AP, 4ug; Detection:14333-1-AP 1:500) with mouse brain tissue lysate 3440ug.