

For Research Use Only

# KRT36 Polyclonal antibody

Catalog Number: 14309-1-AP

1 Publications



## Basic Information

Catalog Number:

14309-1-AP

Size:

350 µg/ml

Source:

Rabbit

Isotype:

IgG

Immunogen Catalog Number:

AG5483

GenBank Accession Number:

BC043581

GeneID (NCBI):

8689

UNIPROT ID:

O76013

Full Name:

keratin 36

Calculated MW:

52 kDa

Observed MW:

48 kDa

Purification Method:

Antigen affinity purification

Recommended Dilutions:

WB 1:500-1:2400

IHC 1:50-1:500

## Applications

Tested Applications:

WB, IHC, ELISA

Cited Applications:

IF

Species Specificity:

human, mouse, rat

Cited Species:

human

**Note-IHC: suggested antigen retrieval with TE buffer pH 9.0; (\*) Alternatively, antigen retrieval may be performed with citrate buffer pH 6.0**

Positive Controls:

WB : mouse skin tissue,

IHC : human skin cancer tissue,

## Background Information

### Notable Publications

Author	Pubmed ID	Journal	Application
Maiko Kawasaki	39392396	Elife	IF

## Storage

Storage:

Store at -20°C. Stable for one year after shipment.

Storage Buffer:

PBS with 0.02% sodium azide and 50% glycerol pH 7.3.

Aliquoting is unnecessary for -20°C storage

For technical support and original validation data for this product please contact:

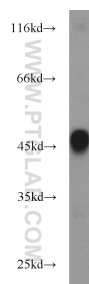
T: 4006900926

E: [Proteintech-CN@ptglab.com](mailto:Proteintech-CN@ptglab.com)

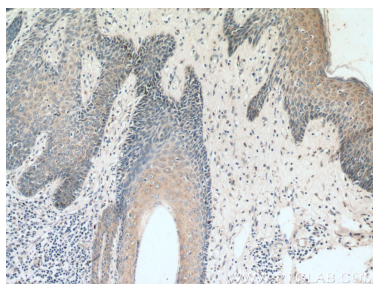
W: [ptgcn.com](http://ptgcn.com)

This product is exclusively available under Proteintech Group brand and is not available to purchase from any other manufacturer.

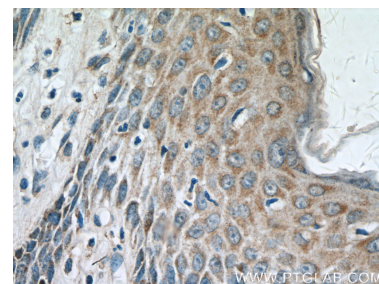
## Selected Validation Data



mouse skin tissue were subjected to SDS PAGE followed by western blot with 14309-1-AP (KRT36 antibody) at dilution of 1:1000 incubated at room temperature for 1.5 hours.



Immunohistochemical analysis of paraffin-embedded human skin cancer tissue slide using 14309-1-AP (KRT36 antibody) at dilution of 1:200 (under 10x lens).



Immunohistochemical analysis of paraffin-embedded human skin cancer tissue slide using 14309-1-AP (KRT36 antibody) at dilution of 1:200 (under 40x lens).