

For Research Use Only

# CDC16/APC6 Polyclonal antibody

Catalog Number: 14307-1-AP



## Basic Information

Catalog Number:

14307-1-AP

Size:

200 µg/ml

Source:

Rabbit

Isotype:

IgG

Immunogen Catalog Number:

AG5427

GenBank Accession Number:

BC010875

GeneID (NCBI):

8881

UNIPROT ID:

Q13042

Full Name:

cell division cycle 16 homolog (S. cerevisiae)

Calculated MW:

72 kDa

Observed MW:

72 kDa

Purification Method:

Antigen affinity purification

Recommended Dilutions:

WB 1:500-1:2000

IHC 1:20-1:200

IF/ICC 1:20-1:200

## Applications

Tested Applications:

WB, IHC, IF/ICC, ELISA

Species Specificity:

human, mouse

**Note-IHC: suggested antigen retrieval with TE buffer pH 9.0; (\*) Alternatively, antigen retrieval may be performed with citrate buffer pH 6.0**

Positive Controls:

WB : HEK-293 cells, HeLa cells, K-562 cells, NIH/3T3 cells, Jurakt cells

IHC : human cervical cancer tissue,

IF/ICC : Hela cells,

## Background Information

### Storage

Storage:

Store at -20°C. Stable for one year after shipment.

Storage Buffer:

PBS with 0.02% sodium azide and 50% glycerol pH 7.3.

Aliquoting is unnecessary for -20°C storage

For technical support and original validation data for this product please contact:

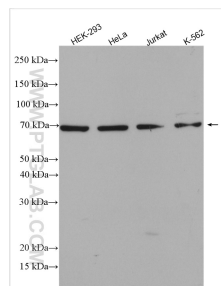
T: 4006900926

E: [Proteintech-CN@ptglab.com](mailto:Proteintech-CN@ptglab.com)

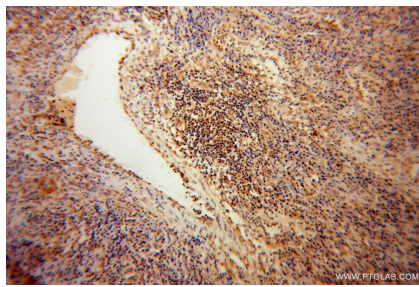
W: [ptgcn.com](http://ptgcn.com)

This product is exclusively available under Proteintech Group brand and is not available to purchase from any other manufacturer.

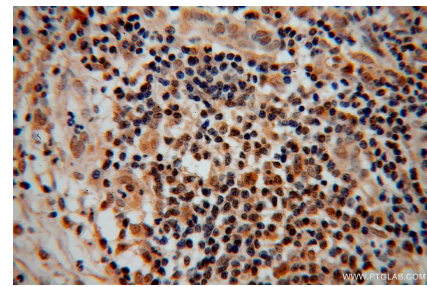
## Selected Validation Data



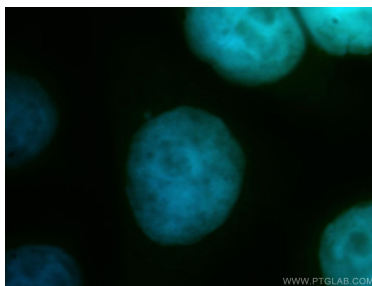
Various lysates were subjected to SDS PAGE followed by western blot with 14307-1-AP (CDC16/APC6 antibody) at dilution of 1:1000 incubated at room temperature for 1.5 hours.



Immunohistochemical analysis of paraffin-embedded human cervical cancer using 14307-1-AP (CDC16/APC6 antibody) at dilution of 1:50 (under 10x lens).



Immunohistochemical analysis of paraffin-embedded human cervical cancer using 14307-1-AP (CDC16/APC6 antibody) at dilution of 1:50 (under 40x lens).



Immunofluorescent analysis of HeLa cells, using CDC16 antibody 14307-1-AP at 1:50 dilution and FITC-labeled donkey anti-rabbit IgG (green). Blue pseudocolor = DAPI (fluorescent DNA dye).