

For Research Use Only

# SULT1C4 Polyclonal antibody, PBS Only

Catalog Number: 14300-1-PBS



## Basic Information

Catalog Number:

14300-1-PBS

Concentration:

1 mg/ml

Source:

Rabbit

Isotype:

IgG

Immunogen Catalog Number:

AG5259

GenBank Accession Number:

BC058861

GeneID (NCBI):

27233

UNIPROT ID:

O75897

Full Name:

sulfotransferase family, cytosolic, 1C, member 4

Calculated MW:

36 kDa

Observed MW:

35 kDa

Purification Method:

Antigen affinity purification

## Applications

Tested Applications:

WB, Indirect ELISA

Species Specificity:

human

## Background Information

SULT1C4 (Sulfotransferase 1C4), a member of a gene subfamily that includes three human members, SULT1C2, 1C3, and 1C4, is a dimeric Phase II drug-metabolizing enzyme primarily expressed in the developing fetus. SULT1C4 transcript is expressed in human intestinal and hepatic cell lines as well as in human liver specimens from different developmental stages, while SULT1C4 protein is barely detectable (PMID: 28222028, 32303576).

## Storage

Storage:

Store at -80°C.

**The product is shipped with ice packs. Upon receipt, store it immediately at -80°C**

Storage Buffer:

PBS only, pH7.3

For technical support and original validation data for this product please contact:

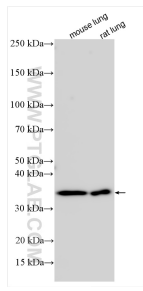
T: 4006900926

E: [Proteintech-CN@ptglab.com](mailto:Proteintech-CN@ptglab.com)

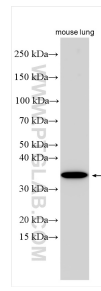
W: [ptgcn.com](http://ptgcn.com)

**This product is exclusively available under Proteintech Group brand and is not available to purchase from any other manufacturer.**

## Selected Validation Data



Various lysates were subjected to SDS PAGE followed by western blot with 14300-1-AP (SULT1C4 antibody) at dilution of 1:2000 incubated at room temperature for 1.5 hours. This data was developed using the same antibody clone with 14300-1-PBS in a different storage buffer formulation.



Various lysates were subjected to SDS PAGE followed by western blot with 14300-1-AP (SULT1C4 antibody) at dilution of 1:1000 incubated at room temperature for 1.5 hours. This data was developed using the same antibody clone with 14300-1-PBS in a different storage buffer formulation.