

For Research Use Only

HLTF Polyclonal antibody, PBS Only

Catalog Number: 14286-1-PBS

Featured Product



Basic Information

Catalog Number:

14286-1-PBS

Source:

Rabbit

Isotype:

IgG

Immunogen Catalog Number:

AG5596

GenBank Accession Number:

BC044659

GeneID (NCBI):

6596

UNIPROT ID:

Q14527

Full Name:

helicase-like transcription factor

Calculated MW:

114 kDa

Observed MW:

114 kDa

Purification Method:

Antigen affinity purification

Applications

Tested Applications:

WB, IHC, IF/ICC, IP, Indirect ELISA

Species Specificity:

human, mouse, rat

Background Information

Helicase-like Transcription Factor (HLTF) is a crucial nuclear protein and member of the SWI/SNF family of chromatin-remodeling complexes, playing a dual role in transcription regulation and DNA damage repair. It functions dually as a regulator of gene expression, utilizing its ATP-dependent helicase activity to modify chromatin structure and facilitate transcription, and as a central effector in the DNA damage response pathway. HLTF is particularly crucial for promoting error-free DNA repair at stalled replication forks via a mechanism called template switching, which prevents the accumulation of mutagenic lesions. HLTF can be detected as 114 kDa.

Storage

Storage:

Store at -80°C.

The product is shipped with ice packs. Upon receipt, store it immediately at -80°C

Storage Buffer:

PBS only, pH7.3

For technical support and original validation data for this product please contact:

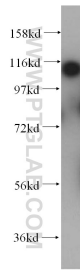
T: 4006900926

E: Proteintech-CN@ptglab.com

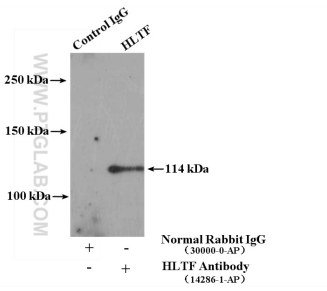
W: ptgcn.com

This product is exclusively available under Proteintech Group brand and is not available to purchase from any other manufacturer.

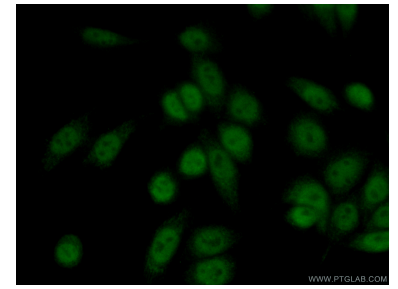
Selected Validation Data



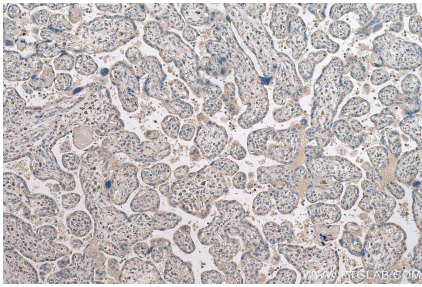
HeLa cells were subjected to SDS PAGE followed by western blot with 14286-1-AP (HLTF antibody) at dilution of 1:300 incubated at room temperature for 1.5 hours. This data was developed using the same antibody clone with 14286-1-PBS in a different storage buffer formulation.



IP result of anti-HLTF (IP:14286-1-AP, 4ug; Detection:14286-1-AP 1:500) with HeLa cells lysate 2400ug. This data was developed using the same antibody clone with 14286-1-PBS in a different storage buffer formulation.



Immunofluorescent analysis of (10% Formaldehyde) fixed HeLa cells using 14286-1-AP (HLTF antibody) at dilution of 1:50 and Alexa Fluor 488-conjugated AffiniPure Goat Anti-Rabbit IgG(H+L). This data was developed using the same antibody clone with 14286-1-PBS in a different storage buffer formulation.



Immunohistochemical analysis of paraffin-embedded human placenta tissue slide using 14286-1-AP (HLTF antibody) at dilution of 1:500 (under 10x lens). Heat mediated antigen retrieval with Tris-EDTA buffer (pH 9.0). This data was developed using the same antibody clone with 14286-1-PBS in a different storage buffer formulation.