

For Research Use Only

# HLTF Polyclonal antibody

Catalog Number: 14286-1-AP

Featured Product

9 Publications



## Basic Information

### Catalog Number:

14286-1-AP

### Source:

Rabbit

### Isotype:

IgG

### Immunogen Catalog Number:

AG5596

### GenBank Accession Number:

BC044659

### GeneID (NCBI):

6596

### UNIPROT ID:

Q14527

### Full Name:

helicase-like transcription factor

### Calculated MW:

114 kDa

### Observed MW:

114 kDa

### Purification Method:

Antigen affinity purification

### Recommended Dilutions:

WB: 1:500-1:1000

IP: 0.5-4.0 ug for 1.0-3.0 mg of total protein lysate

IHC: 1:250-1:1000

IF/ICC: 1:50-1:500

## Applications

### Tested Applications:

WB, IHC, IF/ICC, IP, ELISA

### Cited Applications:

WB, IHC, CoIP, RIP

### Species Specificity:

human, mouse, rat

### Cited Species:

human, mouse

**Note-IHC: suggested antigen retrieval with TE buffer pH 9.0; (\*) Alternatively, antigen retrieval may be performed with citrate buffer pH 6.0**

### Positive Controls:

WB : HeLa cells, K-562 cells

IP : HeLa cells,

IHC : human placenta tissue,

IF/ICC : HeLa cells,

## Background Information

Helicase-like Transcription Factor (HLTF) is a crucial nuclear protein and member of the SWI/SNF family of chromatin-remodeling complexes, playing a dual role in transcription regulation and DNA damage repair. It functions dually as a regulator of gene expression, utilizing its ATP-dependent helicase activity to modify chromatin structure and facilitate transcription, and as a central effector in the DNA damage response pathway. HLTF is particularly crucial for promoting error-free DNA repair at stalled replication forks via a mechanism called template switching, which prevents the accumulation of mutagenic lesions. HLTF can be detected as 114 kDa.

## Notable Publications

Author	Pubmed ID	Journal	Application
Wenying Gao	34630422	Front Immunol	WB
Zhe Yang	32883681	Genes Dev	WB
Li Liu	30320371	Int J Oncol	WB,IHC

## Storage

### Storage:

Store at -20°C. Stable for one year after shipment.

### Storage Buffer:

PBS with 0.02% sodium azide and 50% glycerol, pH7.3

Aliquoting is unnecessary for -20°C storage

For technical support and original validation data for this product please contact:

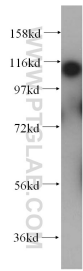
T: 4006900926

E: Proteintech-CN@ptglab.com

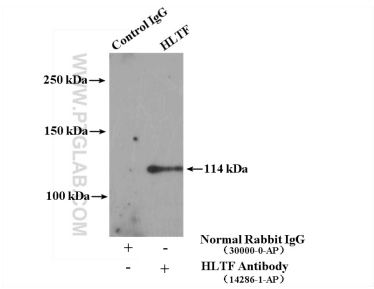
W: ptgcn.com

**This product is exclusively available under Proteintech Group brand and is not available to purchase from any other manufacturer.**

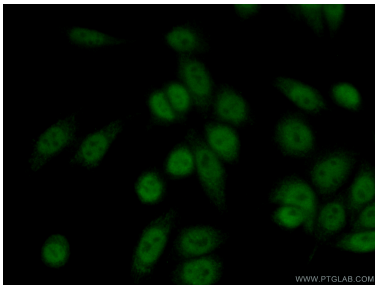
Selected Validation Data



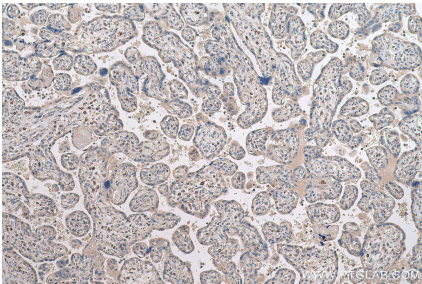
HeLa cells were subjected to SDS PAGE followed by western blot with 14286-1-AP (HLTF antibody) at dilution of 1:300 incubated at room temperature for 1.5 hours.



IP result of anti-HLTF (IP:14286-1-AP, 4ug; Detection:14286-1-AP 1:500) with HeLa cells lysate 2400ug.



Immunofluorescent analysis of (10% Formaldehyde) fixed HeLa cells using 14286-1-AP (HLTF antibody) at dilution of 1:50 and Alexa Fluor 488-conjugated AffiniPure Goat Anti-Rabbit IgG(H+L).



Immunohistochemical analysis of paraffin-embedded human placenta tissue slide using 14286-1-AP (HLTF antibody) at dilution of 1:500 (under 10x lens). Heat mediated antigen retrieval with Tris-EDTA buffer (pH 9.0).