

For Research Use Only

RAB26 Polyclonal antibody

Catalog Number: 14284-1-AP

Featured Product

9 Publications



Basic Information

Catalog Number:

14284-1-AP

Size:

213 µg/ml

Source:

Rabbit

Isotype:

IgG

Immunogen Catalog Number:

AG5581

GenBank Accession Number:

BC066913

GeneID (NCBI):

25837

UNIPROT ID:

Q9ULW5

Full Name:

RAB26, member RAS oncogene family

Calculated MW:

28 kDa

Observed MW:

27-30 kDa

Purification Method:

Antigen affinity purification

Recommended Dilutions:

WB 1:500-1:1000

IHC 1:50-1:500

IF 1:50-1:500

Applications

Tested Applications:

FC (Intra), IF/ICC, IHC, WB, ELISA

Cited Applications:

WB, IP, IF, IHC

Species Specificity:

human, mouse

Cited Species:

human, mouse

Note-IHC: suggested antigen retrieval with TE buffer pH 9.0; (*) Alternatively, antigen retrieval may be performed with citrate buffer pH 6.0

Positive Controls:

WB : mouse pancreas tissue,

IHC : human pancreas tissue,

IF : BxPC-3 cells,

Background Information

Notable Publications

Author	Pubmed ID	Journal	Application
Nianli Liu	31511502	Cell Death Dis	IHC
Zhuo Ma	36341850	Sci Total Environ	WB,IF
Lu Liang	35677538	J Immunol Res	WB

Storage

Storage:

Store at -20°C. Stable for one year after shipment.

Storage Buffer:

PBS with 0.02% sodium azide and 50% glycerol pH 7.3.

Aliquoting is unnecessary for -20°C storage

For technical support and original validation data for this product please contact:

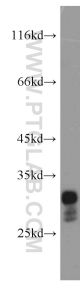
T: 4006900926

E: Proteintech-CN@ptglab.com

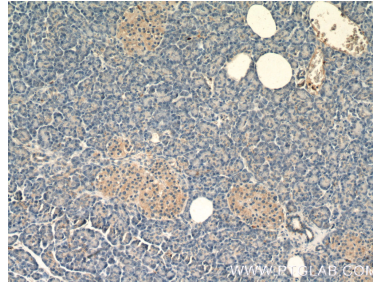
W: ptgcn.com

This product is exclusively available under Proteintech Group brand and is not available to purchase from any other manufacturer.

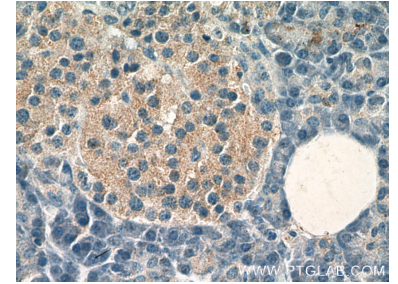
Selected Validation Data



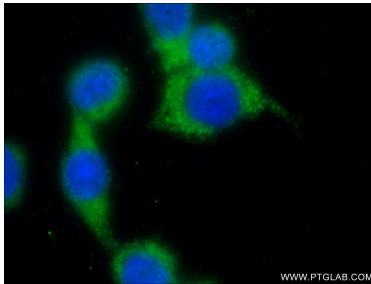
mouse pancreas tissue were subjected to SDS PAGE followed by western blot with 14284-1-AP (RAB26 antibody) at dilution of 1:300 incubated at room temperature for 1.5 hours.



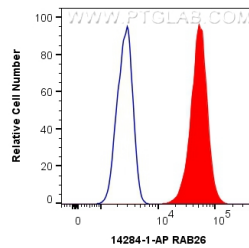
Immunohistochemical analysis of paraffin-embedded human pancreas tissue slide using 14284-1-AP (RAB26 Antibody) at dilution of 1:200 (under 10x lens).



Immunohistochemical analysis of paraffin-embedded human pancreas tissue slide using 14284-1-AP (RAB26 Antibody) at dilution of 1:200 (under 40x lens).



Immunofluorescent analysis of (-20°C Ethanol) fixed BxPC-3 cells using 14284-1-AP (RAB26 antibody) at dilution of 1:50 and Alexa Fluor 488-conjugated AffiniPure Goat Anti-Rabbit IgG(H+L).



1x10⁶ MCF-7 cells were intracellularly stained with 0.4 ug Anti-Human RAB26 (14284-1-AP) and CoraLite®488-Conjugated AffiniPure Goat Anti-Rabbit IgG(H+L) at dilution 1:1000 (red), or 0.4 ug Isotype Control. Cells were fixed with 4% PFA and permeabilized with Flow Cytometry Perm Buffer (PF00011-C).