

For Research Use Only

# ARHGDIG Polyclonal antibody

Catalog Number: 14282-1-AP **1 Publications**



## Basic Information

<b>Catalog Number:</b> 14282-1-AP	<b>GenBank Accession Number:</b> BC047699	<b>Purification Method:</b> Antigen affinity purification
<b>Size:</b> 850 µg/ml	<b>GeneID (NCBI):</b> 398	<b>Recommended Dilutions:</b> WB 1:500-1:2000 IHC 1:20-1:200
<b>Source:</b> Rabbit	<b>UNIPROT ID:</b> Q99819	
<b>Isotype:</b> IgG	<b>Full Name:</b> Rho GDP dissociation inhibitor (GDI)	
<b>Immunogen Catalog Number:</b> AG5554	<b>gamma</b>	
	<b>Calculated MW:</b> 25 kDa	
	<b>Observed MW:</b> 25 kDa	

## Applications

<b>Tested Applications:</b> IHC, WB, ELISA	<b>Positive Controls:</b>
<b>Cited Applications:</b> WB	<b>WB :</b> HEK-293 cells, human brain tissue, HeLa cells, Jurkat cells, MCF-7 cells
<b>Species Specificity:</b> human, mouse, rat	<b>IHC :</b> human pancreas cancer tissue,
<b>Cited Species:</b> human	

**Note-IHC: suggested antigen retrieval with TE buffer pH 9.0; (\*) Alternatively, antigen retrieval may be performed with citrate buffer pH 6.0**

## Background Information

### Notable Publications

Author	Pubmed ID	Journal	Application
Hao Bo	30816545	Oncol Rep	WB

## Storage

**Storage:**  
Store at -20°C. Stable for one year after shipment.  
**Storage Buffer:**  
PBS with 0.02% sodium azide and 50% glycerol pH 7.3.  
Aliquoting is unnecessary for -20°C storage

For technical support and original validation data for this product please contact:

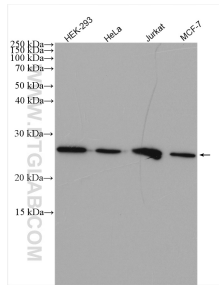
T: 4006900926

E: Proteintech-CN@ptglab.com

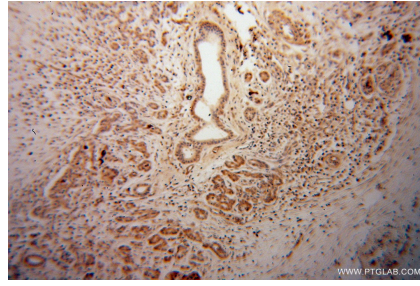
W: ptgcn.com

**This product is exclusively available under Proteintech Group brand and is not available to purchase from any other manufacturer.**

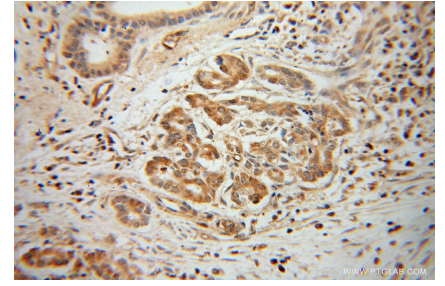
## Selected Validation Data



Various lysates were subjected to SDS PAGE followed by western blot with 14282-1-AP (ARHGDI1 antibody) at dilution of 1:1000 incubated at room temperature for 1.5 hours.



Immunohistochemical analysis of paraffin-embedded human pancreas cancer using 14282-1-AP (ARHGDI1 antibody) at dilution of 1:100 (under 10x lens).



Immunohistochemical analysis of paraffin-embedded human pancreas cancer using 14282-1-AP (ARHGDI1 antibody) at dilution of 1:100 (under 40x lens).