

For Research Use Only

# ZWILCH Polyclonal antibody

Catalog Number: 14281-1-AP

2 Publications



## Basic Information

Catalog Number:

14281-1-AP

Size:

300 ug/ml

Source:

Rabbit

Isotype:

IgG

Immunogen Catalog Number:

AG5454

GenBank Accession Number:

BC036900

GeneID (NCBI):

55055

UNIPROT ID:

Q9H900

Full Name:

Zwilch, kinetochore associated, homolog (Drosophila)

Calculated MW:

67 kDa

Observed MW:

~60 kDa

Purification Method:

Antigen affinity purification

Recommended Dilutions:

WB 1:500-1:1000

IHC 1:200-1:800

## Applications

Tested Applications:

WB, IHC, ELISA

Cited Applications:

IHC

Species Specificity:

human, mouse, rat

Cited Species:

human

**Note-IHC: suggested antigen retrieval with TE buffer pH 9.0; (\*) Alternatively, antigen retrieval may be performed with citrate buffer pH 6.0**

Positive Controls:

WB : PC-3 cells,

IHC : human colon cancer tissue,

## Background Information

ZWILCH is a new component of the ZW10/ROD complex. The complex is a key player in the spindle checkpoint. ZWILCH has two isoforms with MW 67 kDa and 54 kDa.

## Notable Publications

Author	Pubmed ID	Journal	Application
Fengjie Yuan	31291454	Nucleic Acids Res	
Małgorzata Blatkiewicz	37189849	Biomedicines	IHC

## Storage

Storage:

Store at -20°C. Stable for one year after shipment.

Storage Buffer:

PBS with 0.02% sodium azide and 50% glycerol pH 7.3.

Aliquoting is unnecessary for -20°C storage

For technical support and original validation data for this product please contact:

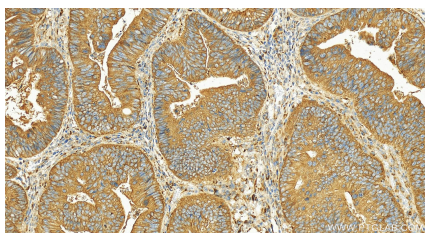
T: 4006900926

E: [Proteintech-CN@ptglab.com](mailto:Proteintech-CN@ptglab.com)

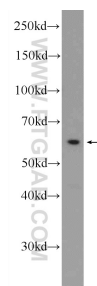
W: [ptgcn.com](http://ptgcn.com)

This product is exclusively available under Proteintech Group brand and is not available to purchase from any other manufacturer.

## Selected Validation Data



Immunohistochemical analysis of paraffin-embedded human colon cancer tissue slide using 14281-1-AP (ZWILCH antibody) at dilution of 1:400 (under 20x lens). Heat mediated antigen retrieval with Tris-EDTA buffer (pH 9.0).



PC-3 cells were subjected to SDS PAGE followed by western blot with 14281-1-AP (ZWILCH Antibody) at dilution of 1:500 incubated at room temperature for 1.5 hours.