

For Research Use Only

GFM1 Polyclonal antibody, PBS Only

Catalog Number: 14274-1-PBS



Basic Information

Catalog Number:

14274-1-PBS

Source:

Rabbit

Isotype:

IgG

Immunogen Catalog Number:

AG5616

GenBank Accession Number:

BC049210

GeneID (NCBI):

85476

UNIPROT ID:

Q96RP9

Full Name:

G elongation factor, mitochondrial 1

Calculated MW:

86 kDa

Observed MW:

85 kDa

Purification Method:

Antigen affinity purification

Applications

Tested Applications:

WB, IHC, IF/ICC, IP, Indirect ELISA

Species Specificity:

human, mouse, rat

Background Information

Different factors catalyze the three stages of protein translation: initiation, elongation, and termination. There are two translational systems in eukaryotes, one in the cytoplasm and the other in the mitochondria. In mitochondria, the elongation phase requires three elongation factors (EF): Tu (TUFM), Ts (TSFM), and G (GFM1)[PMID:19716793]. GFM1 catalyzes translocation during peptide elongation and mediates ribosomal disassembly during ribosome recycling in concert with the ribosomal recycling factor (RRF). [PMID:16487710]

Storage

Storage:

Store at -80°C.

The product is shipped with ice packs. Upon receipt, store it immediately at -80°C

Storage Buffer:

PBS only, pH7.3

For technical support and original validation data for this product please contact:

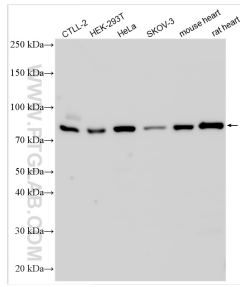
T: 4006900926

E: Proteintech-CN@ptglab.com

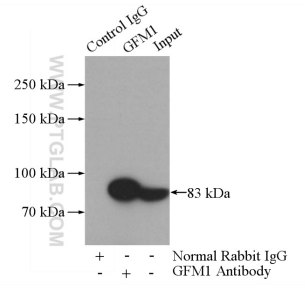
W: ptgcn.com

This product is exclusively available under Proteintech Group brand and is not available to purchase from any other manufacturer.

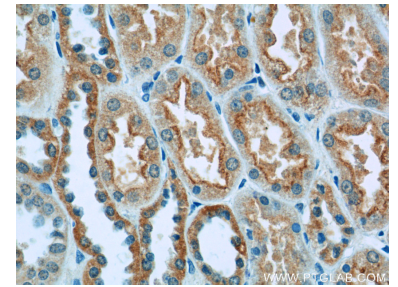
Selected Validation Data



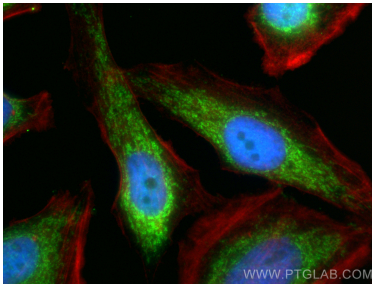
Various lysates were subjected to SDS PAGE followed by western blot with 14274-1-AP (GFM1 antibody) at dilution of 1:2000 incubated at room temperature for 1.5 hours. This data was developed using the same antibody clone with 14274-1-PBS in a different storage buffer formulation.



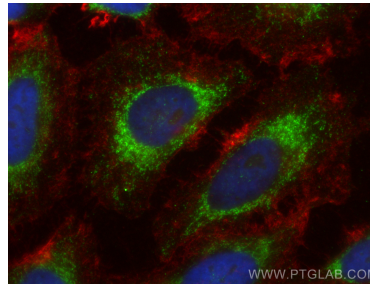
IP result of anti-GFM1 (IP:14274-1-AP, 4ug; Detection:14274-1-AP 1:1000) with HeLa cells lysate 1200ug. This data was developed using the same antibody clone with 14274-1-PBS in a different storage buffer formulation.



Immunohistochemical analysis of paraffin-embedded human kidney tissue slide using 14274-1-AP (GFM1 Antibody) at dilution of 1:50 (under 40x lens). This data was developed using the same antibody clone with 14274-1-PBS in a different storage buffer formulation.



Immunofluorescent analysis of (4% PFA) fixed HeLa cells using GFM1 antibody (14274-1-AP) at dilution of 1:200 and CoralLite@488-Conjugated Goat Anti-Rabbit IgG(H+L) (SA00013-2), CL594-Phalloidin (red). This data was developed using the same antibody clone with 14274-1-PBS in a different storage buffer formulation.



Immunofluorescent analysis of (-20°C Ethanol) fixed HeLa cells using GFM1 antibody (14274-1-AP) at dilution of 1:200 and CoralLite@488-Conjugated Goat Anti-Rabbit IgG(H+L) (SA00013-2), CL594-Phalloidin (red). This data was developed using the same antibody clone with 14274-1-PBS in a different storage buffer formulation.